

The Westerly

Dec/Jan 2026

FREE monthly community magazine
for Massey to Hobsonville Point



- Safer communities
- Home & garden
- Health & beauty
- Property market report

House of Travel
Hobsonville
09 416 0700



Greetings

Christmas 2025. This edition covers the Christmas break but we return in February to bring you the latest local developments.

Already I see seasonal decorations being displayed in homes around our area, neighbours marking the end of the year, maybe starting their plans for the holiday ahead.

In our diverse community the season will be celebrated in a variety of ways that have changed over the past decades. Many people enjoy a time of family gatherings, time to catch up with events that have happened over their year, both happy and sad, successes and failures. A time for those with children to share their excitement over the magic of Christmas, maybe helping younger ones learn new skills, a new bicycle. We all have our own memories of past years, seasonal food, nostalgic music, family holidays, games and activities.

Our local environment provides an opportunity to begin celebrations with Christmas on The Point at the Rifle Range on 7th December and Whenuapai Family Fun Day on 14th December. Both functions will have food trucks available.

Use your magazine to find useful businesses that can help to get your home and vehicle into the best condition for the weeks ahead. I am sure there are many people who look forward to a time of relaxation, a few weeks without the regular school 'runs', the search for lost uniform and essential sports kit. A time to draw breath before hurtling back into a new maelstrom of activities. A time to explore our local area and further afield for those hidden 'gems' of walks that Auckland offers. Buses and ferries can open up an adventure for families used to car travel and provide a learning experience for children not used to planning routes and timetables.

May we all keep in mind the many members of our community who maintain their work schedules so we can relax and enjoy the season. Emergency services, retail, hospitality, to name a few. Thank you to all our loyal readers for reading our magazine, and to our contributors for bringing so many local businesses to the notice of those that enjoy the varied content and useful articles. Graham, Gail, Gabrielle, Geoff and Sarah for all their work through the year that have made this magazine happen.

May we all look ahead with optimism to a bright 2026. Seasonal Greetings from the team at The Westerly.

John. Editor.



Circulation is 12,500 print copies. Advertising starts at only \$100 + gst which includes a business card, editorial and an image. Please get in touch with Gabrielle today editorial@thewesterly.co.nz

ENQUIRIES / FEEDBACK:
John Williamson
P 021 028 54178
E jbw51red@googlemail.com

COVER PHOTO: House of Travel Hobsonville
PRINT RUN: 12,500 copies, Treehouse Print
EMAIL DATABASE: Sublime NZ
DISCLAIMER: Articles published are submitted by individual entities and should not be taken as reflecting the editorial views of this magazine or the publishers of the Westerly Limited.
Articles are not to be re-published unless written consent is granted from the publisher (Graham McIntyre).

What's inside

- 3 People & Places
- 9 Community News
- 15 Food & Beverage
- 17 Property Hub
- 19 Property News
- 24 Property Statistics
- 28 Property Market
- 41 Home & Garden
- 49 Young Learners
- 51 Aged Care
- 54 Health & Beauty
- 57 Area Columnists



People & Places

THEWESTERLY.CO.NZ

What's on in the area?



LIVE
MUSIC

FREE EVENT

RIFLE RANGE

14 December 2025

SUNDAY 5PM

Christmas Gig with Carols

Hobsonville Point

wayne taylor band

Songs by The Beatles, Elton John, Billy Joel, Lionel Ritchie, Andre Crouch and more. Come and enjoy the music.
www.waynetaylorband.co.nz

FAMILY FUN

SUMMER SERIES

FREE Event • Mega Lawn Games

Face Painting • Bubble Soccer

Hunger Ball • Ice-Cream Truck

Sundays 2:30 - 5pm

14 December & 15 February

Whenuapai Park

(by Parkhouse Cafe)

Free community event:

Christmas

Decoration Workshop

For children 5 -12 yrs

Sunday 14 December 3.30-5.00pm

Sunderland Lounge

Cinema Road, Hobsonville Point

Registration not required

Hosted by Discoverers Church

Contact: Richard Small 021 385748

A HOBSONVILLE COMMUNITY EVENT

Christmas

on the Point

SUN 7 DECEMBER

4:30 - 7pm

RIFLE RANGE AMPHITHEATRE, HOBSONVILLE POINT

Christmas Carols

Food Trucks

OR SUPPORT LOCAL MARKETS

Local Performances

Bouncy Castle

Plus Photos with Santa!

BROUGHT TO YOU BY:

STIHL SHOP Westgate



Choosing the right lawnmower is the first step in caring for your lawn. Head in and see our team at STIHL SHOP Westgate for expert advice on selecting the best lawnmower for your property. We have a great range of STIHL battery and petrol lawnmowers, as well as other quality brands such as Masport and LawnMaster, all available in-store. STIHL SHOP Westgate is also the home of the STIHL iMOW Robotic lawnmowers, with all models currently on display at great sale prices.

SOME EXPERT TIPS FROM OUR TEAM:

To avoid damage to your lawnmower and for a superior result, if your grass has grown tall, you might need to do a couple of passes; starting with the highest blade height setting and then at a lower setting during the second pass. Our STIHL battery lawnmowers have various cutting heights to choose from and can be easily lowered or raised by using the lever on the side of the machine.

Kiwis like to cut right down low to the ground, however taking too much off the top can be detrimental to the health of your lawn. Mowing at a recommended height of 4 – 6 cm helps prevent yellow blemishes and unsightly scorch marks from popping up across the surface of your lawn, and reduces its susceptibility to damage from pests and disease.

Always use sharp lawnmower blades for nice, clean cuts that won't damage your grass. If you notice your blades have become blunt drop your lawnmower into our team for a quick and easy sharpening service.

Pat, Mo, Ryan and the team at STIHL SHOP Westgate look forward to seeing you in-store! They're a handy drop-off location for all your small engine servicing requirements too!

STIHL SHOP Westgate is open Mon-Fr 8.30-5, Sat & Sun 9 – 3

STIHL SHOP
KUMEU & WESTGATE

Cub Cadet
HONDA
HANSA
Masport

54 Main Rd
Kumeu
PH: 412 8592
OPEN MON-SAT

NOW AT TWO HANDY LOCATIONS
FOR EXPERT ADVICE & SERVICE

15 Kakano Rd
Westgate
PH: 930 9999
OPEN 7 DAYS

Summer reset: Movement that recharges



December brings sunshine, celebration, and a chance to slow down. But while the season invites rest, your body still craves movement – especially the kind that restores.

After a busy year, it's tempting to collapse into the holidays. But too much stillness can leave you feeling stiff, sluggish, or sore. This summer, try a "reset" approach. Instead of pushing harder, focus on gentle, nourishing activity: beach walks, garden stretches, or low-impact group classes. These movements support circulation, reduce stress, and help your nervous system unwind.

Recovery is just as vital as exertion. If you're managing an injury or feeling run down, now's the time to listen to your body. A physiotherapist can help you identify movement patterns that restore balance and prevent flare-ups, so you can enjoy the silly season without setbacks.

Even small changes make a difference. Start your day with a few minutes of stretching, take your coffee outside for a walk, or swap your screen for a swim. Movement doesn't have to be intense to be effective, it just has to feel good.

Let this summer be a time to reconnect, with nature, with your body, and with the people who matter most. Whether it's a quiet moment with loved ones or a shared walk in the sun, movement can be a beautiful way to bond.

From our team to yours: if you're lucky enough to get a break, we hope it's restful, joyful, and filled with connection. Here's to Freedom in Movement and a summer that truly supports it.

Hobsonville Physiotherapy: 027 264 0003

physio@hobsonvillephysio.co.nz

hobsonville
PHYSIOTHERAPY
FREEDOM IN MOVEMENT

- ACC ACCREDITED PROVIDER
- SPORTS INJURIES
- PRE/POST SURGICAL REHAB
- ACUPUNCTURE / DRY NEEDLING
- MASSAGE AND LYMPHATIC DRAINAGE

09 4164455 | 0272640003

124 Hobsonville Road (by Woolworths)

physio@hobsonvillephysio.co.nz

www.hobsonvillephysio.co.nz

Kiwi Caravans



in top condition.

Kiwi Caravans was founded in 2018 with a simple dream: to bring high-quality UK caravans to West Auckland. Proudly family owned and based in Hobsonville, we've grown from that dream into a trusted name known for genuine service, expert advice, and a friendly approach. We take the time to get to know our customers and understand their needs so whether you're buying your very first caravan and need help navigating the technical details, or you're a seasoned caravanner looking to modify, upgrade, or service your current setup, we have you covered.

But we're not just a family business – we're passionate explorers ourselves. We love to get out and experience the freedom of the open road, whether it's a weekend camping trip in our own Swift Sprite around beautiful Aotearoa, or a new adventure further afield. Travel and exploration are in our DNA.

One of our favourite things is hearing from our customers about their adventures. One family is currently travelling the length of New Zealand and sends us regular updates – something that always makes the whole team smile.

So whether you're buying, upgrading, accessorising, or booking a routine service, we're here to help. Visit our website or get in touch today to start your next adventure with Kiwi Caravans.

www.kiwicaravans.co.nz | 027 244 2443 | graeme@kiwicaravans.co.nz

KIWI CARAVANS

Your Next Adventure Starts Here!

Our expert team will help you find the perfect fit and provide ongoing after-sale support, from upgrades, maintenance, repairs and keeping your caravan in top condition.

www.kiwicaravans.co.nz | 027 244 2443 | graeme@kiwicaravans.co.nz

Christmas on the Point is happening on Dec 7th



Come along to the Rifle Range Amphitheatre on Sunday 7 December from 4:30 – 6:30pm. It's a fun and festive community event with performances as well as a chance to join in singing Christmas Carols. There will be a bouncy castle, a visit from Santa + Santa photo booth, food trucks, and lawn games. The event is free, just bring money for food purchases or your own picnic and something to sit on. Keep an eye on Connected Neighbourhoods Trust Facebook page for further details. <https://www.facebook.com/connectedneighbourhoods.nz>

**PLUMBER/
GASFITTER**

All repairs & maintenance.
Hot water cylinders,
watermains, gas water
heating and gas hobs.
Affordable and reliable.
No callout fees.

Phone Mike
0800 82 83 85

How to master the auction process



Attending an auction can be an overwhelming experience.

Understanding your finances

It's important to have your finances in order before attending an auction, as auctions are Unconditional.

One of the most important things you need to do is to get pre-approved for finance.

As not all banks are created equal, it's best to talk to a Mortgage Adviser to make sure you have maximised your borrowing power to buy on the day. Even if you've already secured pre-approved lending, you must get the property "signed off" by the lender before auction day.

Setting your maximum budget

Setting your maximum budget is another one of the most important things you need to do before attending an auction.

When setting your maximum budget, it's important to be realistic as it's very easy to get caught up in the emotion and excitement on auction day.

Getting to know how much each step up in your bidding will cost you each week, can help determine how high you are willing to go on a property.

Understanding the auction contract

Before bidding at an auction, take time to read and understand the auction contract beforehand and ideally have your solicitor look over it. The auction contract is a legal document that sets out the terms and conditions of the sale.

If you wish to alter the agreement or impose any conditions on the sale you must arrange this before the auction.

Any proposed changes should be discussed with the Real Estate Agent and your solicitor. The vendor will then decide to accept your proposed changes or conditions, or not. Don't get caught up in the excitement of the auction. Set your maximum budget with your trusted advisers before attending. Need pre-approval? Stephen Massey – Mortgage Advisor, Call 021 711 444



Loan Market

Stephen Massey
Mortgage Adviser

stephen.massey@loanmarket.co.nz
021 711 444

Let's chat.

Portage Ceramic Awards

The Trusts are proud to announce their sponsorship of the 2025 Portage Ceramic Awards, Aotearoa's premier celebration of ceramic art. This partnership reflects The Trusts' ongoing commitment to supporting arts, culture, and community connection in West Auckland and beyond.

The Portage Ceramic Awards is an annual celebration of contemporary ceramics in Aotearoa. Established in 2001, the awards embrace the rich history of pottery in the West and have become a cornerstone of New Zealand's arts calendar. Since its inception, the awards have maintained an inclusive framework, welcoming practitioners with a wide range of practices – from traditional forms to experimental and conceptual approaches.

"The Portage Ceramic Awards are a cornerstone of New Zealand's art scene, and we are proud to support an event that celebrates creativity, community, and cultural expression. These awards not only highlight the incredible skill of ceramic artists but also bring people together to experience and appreciate the power of art," says Adrienne Schierner, Director, Te Uru.

The 2025 Portage Ceramic Awards will be presented at Te Uru Waitākere Contemporary Gallery later this year. The exhibition will showcase a diverse and thought-provoking collection of works from across the motu, offering visitors a chance to experience the many ways clay continues to inspire artistic expression.

For more information about the awards and upcoming exhibition dates, visit <https://teuru.org.nz/>



"What's the greatest compliment? When care is felt"

For many, the thought of having a Colonoscopy or Gastroscopy can be a time of anxiety and uncertainty, which is why choosing a trusted provider is essential to ensure a safe and comfortable experience.

At Waitematā Endoscopy, genuine patient experience is the most meaningful feedback and powerful form of endorsement. We deeply value the trust patients and referrers place in us during these vulnerable moments, and authentic feedback reminds us of the responsibility we carry and how care is felt.

As expressed by a few of our recent patients who have shared the following:

"From the very minute I walked in I was so impressed with how friendly and helpful all the staff were. They went above and beyond and I loved the little touches like putting on a heater for me and lots of smiles and great instructions. My Doctor John Perry was very good and informative and I felt I had a very professional procedure to the highest standard. All the nurses were so friendly and helpful and I had the best experience. Thank you for your hard work and I really appreciated it all."

"I know it sounds very strange to say you had a positive experience having a colonoscopy but that is how the staff here make you feel. From the time I walked through the door everyone was so kind and caring. From the

receptionist to the nurses, and the lovely Dr Pandey, everyone was very professional and everything was well organised. Lovely touch at the end when I was having my sandwich and coffee and they brought my friend, who had come to pick me up, through to sit with me. Sent me home with a full report and lots of helpful literature to provide more information. They managed to make something that is inherently very stressful into a very calm and positive day. Thank you."

"What a great experience from the team - fully prepped for my colonoscopy (yikes!) I turned up early - a day early it turns out - I was met without judgement and with incredible kindness and they fitted me in without it feeling like they were - 6 star service when it was my responsibility for mixing up the days - so grateful."

These speak to our level of clinical excellence and affirm that our purpose, to provide exceptional endoscopy care at every opportunity, matters.

With a commitment to continuous quality improvement, we also regularly survey our patient's experiences, and are delighted that in our most recent results, over 99% said they would recommend us to a family member or friend needing an endoscopy.

At Waitematā Endoscopy, we aim to make taking a proactive approach to your health easier. Our experienced team will help to put you at ease when it comes to your endoscopy. Take a virtual tour of the patient journey and our clinic for an insight of what to expect at www.waitemataendoscopy.co.nz/locations

Noho ora mai (Stay well) Sarah McNamara. Quality Coordinator & Endoscopy Nurse Waitemata Endoscopy

WE

are dedicated to exceptional patient care

With increased capacity, Waitemata Endoscopy is able to offer timelier access to a group of experienced Gastroenterologists and Surgeons

Appointments are available within 7 working days for most Colonoscopy & Gastroscopy procedures by matching you with the availability of our experienced Specialists*

Talk to your GP about a referral to the Waitemata Endoscopy Group, or you can self-refer at:

www.waitemataendoscopy.co.nz/referrals

WE have you covered from 'Top to Bottom'



WAITEMATA
ENDOSCOPY

a joint venture with



Southern Cross Healthcare





*Scan to find out more or call us on (09) 925 4449

URGENT APPOINTMENTS AVAILABLE

Visual Alerting Devices (VAD's)



Recently, it has come to our attention that Visual Alerting Devices (VADs) have become a focus of fire alarm and building code compliance checks by several city and regional councils. VADs are used in workplaces where noise levels are high and hearing protection is routinely required, such as workshops, manufacturing floors, and sawmills. In these environments, visual alarms may be necessary in addition to audible alarms to ensure that workers can perceive an evacuation signal.

Clause 406.4 of NZS 4512:2021 – Fire Detection and Alarm Systems in Buildings – states that if hearing protection is routinely worn, audible alarms may not be sufficient for life safety. In such cases, visual alerting devices such as strobe lights or flashing beacons must be installed. Because NZS 4512 is a cited standard in the New Zealand Building Code under Clause F7 – Warning Systems, compliance effectively becomes a legal requirement where a compliant fire alarm system is necessary.

However, Clause 406.4 is not written directly into the Building Code. It is contained within NZS 4512:2021, the primary standard used by architects and fire engineers when designing new buildings or major refurbishments. This suggests that the requirement may apply mainly to new builds or significant renovations where a Code Compliance Certificate (CCC) is required.



Businesses must now have an effective Health and Safety culture with an ever-increasing personal liability for Business Owners, Managers, and exposure for Company Directors, Trustees, and members of Governing Entities.

Contact Securo's John Riddell, phone 0274 779 750, for practical advice, tools, and solutions for an effective workplace Health and Safety plan.



www.securo.co.nz 0800 55 33 44

securo

In many workplaces, noisy tasks occur sporadically, and hearing protection is worn for only brief periods. Modern fire alarm systems are also deafening and can be heard through most standard hearing protection. In such cases, VADs may not be required.

WorkSafe NZ advised that determining Building Code compliance is not their role, but where hearing protection might prevent workers' hearing alarms, "reasonably practicable" controls should be applied, with VADs being one possible option.

If you believe VADs may be necessary, don't hesitate to get in touch with John Riddell, email securo4@securo.co.nz or check out www.securo.co.nz for assistance.

TaxMasters NZ Ltd



TaxMasters NZ Ltd is a growing Accounting/Business Consultancy based in Scott Point Hobsonville.

Business confidence is picking up and we are looking for new clients.

We'll also look at buying a block of fees from or merging with a retiring accountant who wants their clients to continue getting great service and old-school, face-to-face attention.

Any small local firm/bookkeeper who has been thinking of a merger to expand their footprint can also get in touch.

We're an independent branch of Armstrong Hotchin & Co Accountants of Takapuna, so we are well supported and trusted by clients and IRD alike.

A local branch is an option.

Call Neil today at 021-235-7081.



West Auckland to North Shore

Annual Accounts & Tax Returns

Company Partnership Trust LTC

Small to Medium Business

Fixed Fees * No Surprises

Call now 021-235-7081

Neil Armstrong

[*https://www.taxmasters.co.nz/general-4](https://www.taxmasters.co.nz/general-4)

Community News

Franklin Farm Sunflower fields & Butterfly house – Opening 26th December



Franklin Farm in Waimauku is bursting into summer – and the gates open from 26th December. Come explore, unwind, and create memories surrounded by colour, nature, and plenty of farm

fun. Sunflower Fields- The golden fields are nearly in full bloom! Wander through acres of sunflowers, snap photos with our fun farm props, enjoy a picnic, and pick your own blooms to take home.

Your entry also includes access to our brand-new Franklin Farmyard – meet our cheeky goats, friendly chickens, and our micro mini cow, Bubba Gump...and don't forget Doggy Fridays, when pups are welcome to join in the sunflower fun.

The Butterfly House- Step inside and watch hundreds of monarchs flutter all around you. Learn about their fascinating life cycle and experience the magic up close.

This year, we've added even more family fun – bouncy castles, bunny cuddles, and a maize maze to get lost in. Every weekend, enjoy free face painting, plus coffee and food trucks serving up delicious bites and drinks.

For a little extra, you can pick your own sweetcorn, farm-grown watermelon, dahlias, and zinnias – all fresh from

the field. With over 120 years of family farming history, Franklin Farm is proud to share our love of the land and help families connect with nature.

Stay up to date on Facebook: Franklin Farm Waimauku Visit: franklinfarm.nz

Upside-down Christmas at St Chad's

Our sunny, beachy, BBQ and pavlova-flavoured Christmases are so different to the other side of the world's snowy, turkey, Christmas pudding and custard (or brandy butter) -flavoured Christmases – though many of us still love a bit of Christmas pudding, custard and cream. Even some of the old Christmas carols paint a different picture to ours – “dashing through the snow...”?

You are welcome to come to our Aotearoa Upside-down Family Christmas Service on Sunday 21 December at 10am, followed by a delicious morning tea. We will have New Zealand-written carols, dotted with a few familiar carols and of course, a great story woven with them, the greatest story ever told.

On Sunday 14 December, 10am all are welcome to come and enjoy a modern Christmas play with a bit of humour – not quite like one you've seen before.

And on Christmas morning at 10am all are welcome to come to a short Family Communion service.

Christmas Cheer will also be sung out in St Chad's church by our local Kumeu Singers Choir on Sun 14 December at 7pm and prior to that by Pohutukawa Singers on Sun 30 November at 4pm. Please Google Pohutukawa Singers for cost and more info.

A very happy Christmas to you all from us at St Chad's, Huapai

FRANKLIN FARM
EST. 1906
Waimauku

Sunflower Fields
Butterfly House
Animal Farmyard & more!

stay up to date –
f Franklin Farm Waimauku
franklinfarm.nz

Opening late December



Q Metal designs



Your local experts in metal fabrication, CNC plasma cutting & repairs

Looking for reliable, precision metalwork right here in the community?

At QMetalDesigns, we combine traditional craftsmanship and

with our CNC plasma cutting machine we can deliver top-quality results on every project.

From custom metal art to industrial parts, furniture or farm repairs to one-off designs – we’ve got you covered.

Our Services Include:

- CNC plasma cutting – accurate, clean, and ideal for custom designs
- Welding & fabrication – steel, stainless, aluminium, brass
- Machinery repairs – mowers, tractors, farm equipment & implements
- Commercial maintenance – factory repairs, modifications & upgrades
- Custom gates, signage, furniture & architectural features
- One-off parts, brackets & replacements made to order

Whether you’re a farmer needing a quick fix, a business needing reliable commercial repairs, or a homeowner wanting something custom and unique, Q Metal Designs delivers workmanship you can trust – right here in your own community.

Servicing our community and surrounding areas. Proudly local. Expertly crafted. Built to last.

Call Today: 021 959 719

Email: gareth@qmetaldesigns.co.nz 751 SH16, Kumeu.

Let Q Metal Designs bring your project to life – with precision, creativity, and local pride.

Gareth Quarterman
Director/Owner
Metal Fabrication & Manufacturing

gareth@qmetaldesigns.co.nz
Tel: +64 21 959 719
www.qmetaldesigns.co.nz
751 Sh16, Kumeu, Auckland, 0883, NZ

Experience the best of Normandy & Brittany



Boutique Tours France, June 2026

Step beyond the guidebooks and into the real France with Boutique Tours France’s 14-day small-group journey from Normandy to Brittany, departing 13–26 June 2026. Designed for travellers who

value comfort, culture and connection, this exclusive experience blends famous highlights with hidden gems – all led by two passionate Kiwi guides who know France like locals.

With a maximum of just eight guests, this boutique tour offers the perfect balance of structure and spontaneity. From the opulent Palace of Versailles and Monet’s iconic gardens at Giverny to the moving Normandy landing beaches, the medieval wonder of Mont Saint-Michel, and Brittany’s coastal treasures like Saint-Malo, Dinard and the Pink Granite Coast, every day reveals another layer of northern France’s beauty. Guests stay in hand-picked boutique hotels, enjoy authentic regional cuisine, and have time to explore at a relaxed pace – no rushing, no crowds, just real experiences.

Meet Your Guides – Patsy, founder of Boutique Tours France, brings her signature Kiwi warmth and love of French life to every tour. A fluent French speaker and experienced host, she ensures everything runs smoothly – with her trademark mix of professionalism and good humour.

Catherine, originally from Brittany, adds local insight and connections that transform each visit into a truly personal experience. Together, Patsy and Catherine create a welcoming, friendly atmosphere where guests feel more like travelling companions than tourists.

Why Book Now – Only 3 places are available – this boutique tour sells out quickly. June offers long days, gentle weather and fewer crowds. The price includes 13 nights’ boutique accommodation, transport, breakfasts, most dinners, and entrance fees to key sites such as Versailles, Monet’s Gardens and Mont Saint-Michel. Guests enjoy special local experiences, coastal cruises,

Catherine Flot
021 025 37338

Patsy Sackx
027 490 4321

and insider access arranged by the guides. Past travellers rave about the care and warmth Patsy and Catherine bring to every journey: “The attention and care from Patsy and Catherine made the trip unforgettable – beyond all expectations.”

Tour Dates: 13–26 June 2026 – Bookings –

boutiquetoursfrance.co.nz, info@boutiquetoursfrance.co.nz

Healing anxiety from the inside out



By Dr Fiona Mead, Director | Veterinarian, 111 Vet Clinic Kumeu

In Traditional Chinese Medicine (TCM), anxiety, timidity, and fear aren’t just emotional states – they’re signs of Blood Deficiency. We’re not talking anaemia here.

When the body’s vital “Blood” energy is low, the mind loses its anchor. The result? Restlessness, poor sleep, nervousness – in both people and pets.

You might see it in a timid dog that startles easily, or a person whose mind races even when life seems fine. Western medicine might reach for sedatives or supplements; TCM instead seeks to nourish the root, rebuilding calm from within.

Herbs such as Dang Gui (Angelica sinensis), Bai Shao (White Peony), and He Shou Wu are used to enrich the blood, restore vitality, and calm the spirit (“Shen”). These same principles apply to animals – with the right veterinary guidance.

True healing requires more than symptom control. It’s leadership, nourishment, and calm energy, consistently offered. As we move into the festive rush, remember this simple grounding ritual:

- 1- Stop. Feel your feet on the earth.
- 2- Breathe in through the nose for 4 seconds.
- 3 – Hold 2 seconds.
- 4- Exhale for 6 seconds softly through a slightly open mouth.

Regular & Emergency Veterinary Care

in the of Kumeu

OPEN 24 HOURS
7 days | 365 days of the year

48 Main Road, Kumeu office@111vetclinic.co.nz

5- Smile softly – even if forced – it resets your parasympathetic nervous system.

Do this three times a day. You’ll notice your animals becoming calmer too – as they sync to your heartbeat.

At 111 Vet Clinic, we blend modern medicine with TCM wisdom to treat not just the body, but the energy that fuels it. Because healing isn’t just about fixing problems – it’s about restoring peace.

Fiona and the 111 Vet Clinic Team would like to thank the wonderful people in the community who have supported our clinic in its first year of being open.

We all wish you and your (2 & 4 legged) family members a safe and happy summer season.

Remember we are open 24/7 and through all the public holidays coming up, to support you and your pets.

Visit 48 Main Road Kumeu or call 09 86 96 111 / (OW TOWN 111) to speak with our experienced team.

Raine & Horne.

Graham McIntyre
Licensed Agent
Kumeu | Hobsonville

027 632 0421
graham.mcintyre@kumeu.rh.co.nz

rh.co.nz
Raine & Horne New Zealand PTY Ltd Licensed REAA(2008)

Paul Miller
Freedom Drivers Hobsonville

+64 021 321 869 | (09) 302 2377
hobsonville@freedomdrivers.co.nz

- Hospital & Medical Appointments
- Specialist Treatments
- School Transport
- Airport Transfers
- Shopping & Social Trips

ACC Approved • Total Mobility Cards • Eftpos

Branding Anything Legal

GIFTS - SIGNAGE - AWARDS
APPAREL WEBSITES MERCH
FREE MARKETING ADVICE
SUPER FRIENDLY STAFF
TEL 412 6235

“Heading away for the holidays? here’s something worth knowing”

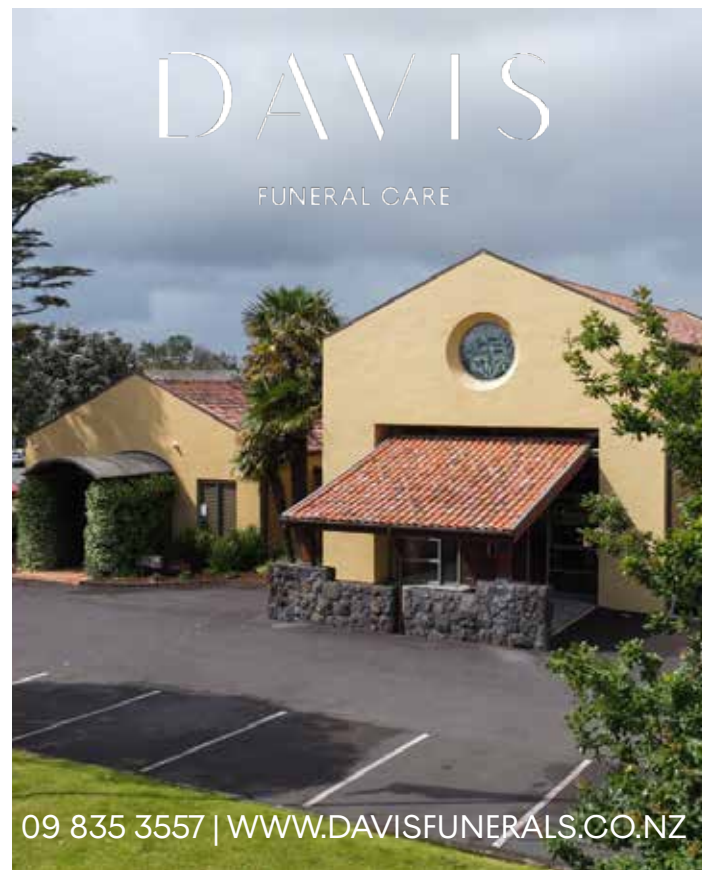


And so the holiday season is just about upon us. For many it represents the opportunity to enjoy a summer's break free of work and in the company of friends and family.

For many it is a chance to ditch the Christmas celebrations and get away camping; better still jumping on a plane and getting out of the country for a family break. The thrill and excitement of getting away invariably does not include thoughts of "what do I do if a family member was to die either back in New Zealand in your absence or abroad".

The purpose of providing this information is not to dampen the excitement of a holiday, but instead, with some simple planning and prior thought, allow the family to enjoy that well-earned getaway with peace of mind.

I can recall situations where a family either visiting New Zealand or on holiday abroad have experienced a sudden and totally unexpected death of a loved one, says Michael Powell, General Manager, Davis Funerals. The shock associated with a sudden death is hard enough to comprehend, let alone when it happens in a foreign environment, far from friends and familiar faces,



and seemingly in an environment where a total paucity of information or support exists. We also experience situations where the family has gone away, and an elderly parent in care dies, says Powell.

There are a few things that can help under such situations, not limited to but including:

- In the event of a sudden death abroad, local Police and authorities will take control of the situation, for the purposes of establishing a presumed cause of death and issuing a death certificate. Our advice at this stage is to slow down, take things one step at a time, and contact the local NZ Consulate offices to seek support. This is particularly important if you are visiting a non-English speaking country.

- In our experience as a specialist provider of repatriation services, we recommend contacting a funeral home here in New Zealand who can also offer support. Your funeral director can further assist in helping identify a suitable provider in the country where the death has occurred. This is required to ensure the dignified handling of the deceased and their travel and departure requirements are completed. Here at Davis Funeral Care, we regularly coordinate these activities.

- If you are traveling abroad, whilst many credit cards may offer a level of travel insurance if used for the booking of flights and accommodation, it is important to understand the cover provided, says Powell. Our experience is that cover linked to a credit card is typically limited to compensation for lost baggage, flight cancellations, and modest levels of medical and hospitalisation cover. Many such card-linked covers do not make any provision for repatriation costs. Travel insurance can be arranged online or through a travel agent and provides very cost-effective mitigation of the risk of not being sufficiently covered.

- If you are going away and receive notification of an elderly relative passing, make sure you have a plan in place to enable the engagement of your chosen funeral director. All it takes is a single phone call, and the necessary activities associated with the transfer and looking after of your loved one can happen, in turn slowing things down and allowing family time to travel back to organise plans for a funeral or farewell.



Auckland Folk Festival at Kumeu January 23- 26



The Auckland Folk Festival returns to the Kumeu Showgrounds in 2026. A massive programme is offered showcasing local and international acts across the musical

spectrum. The three-day event includes marquees, onsite camping and food and market stalls.

Five stages (including a dedicated kids' stage) run all weekend while food trucks feature, alongside flax weaving, pottery, music and dance workshops. Headlining the 2026 festival is multi award- winning indie-folk favourite Mel Parsons. The New Zealand singer and songwriter will delight folk festival visitors with her voice, wit and deft hand. Her captivating live shows and music has won her a fan base across six records and countless national and international tours. Mel was also a 2025 Taite Music Prize finalist and a finalist in the 2025 Aotearoa Music Awards Album of the Year and Best Folk Artist categories.

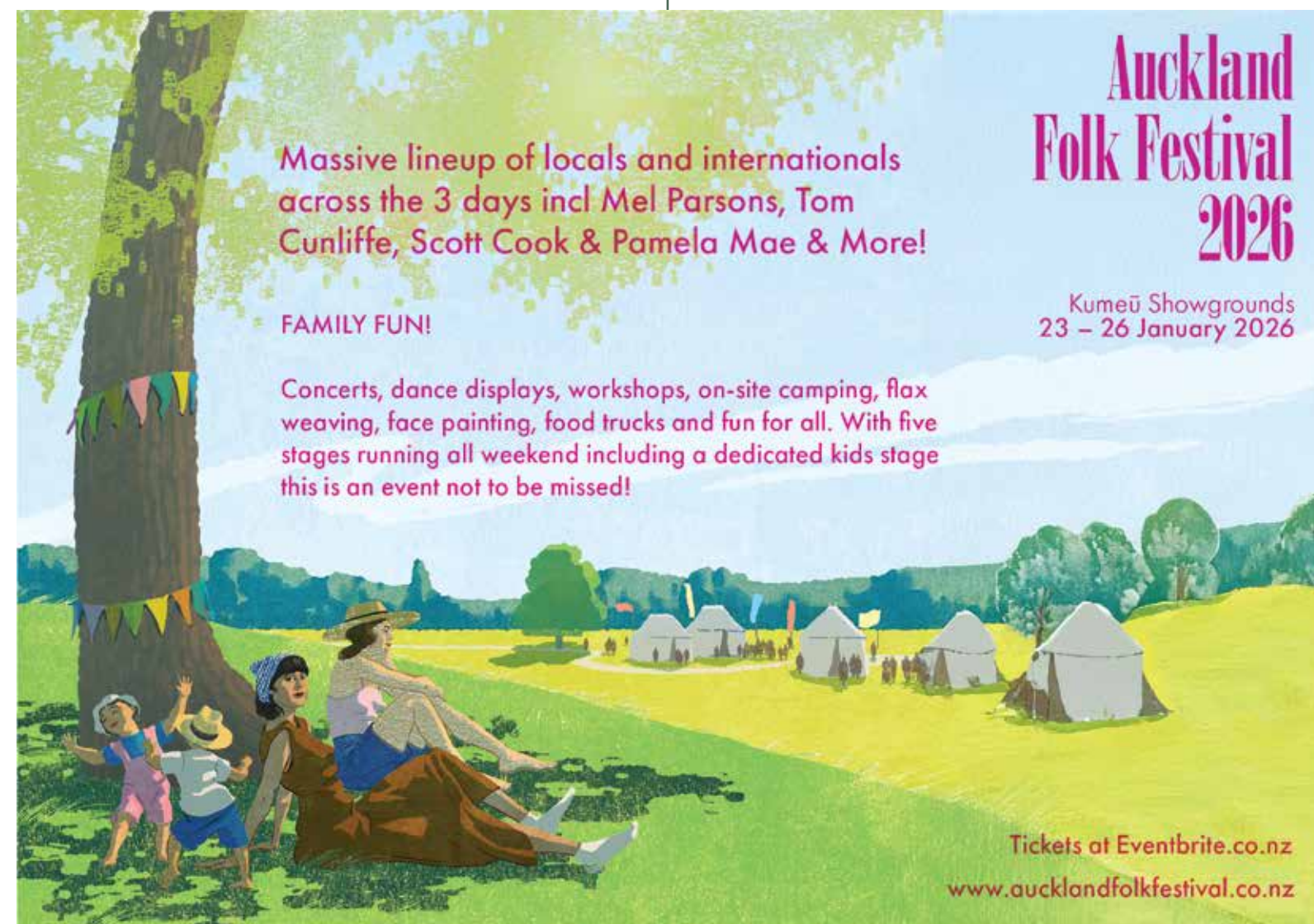
Two-time Juno award winning Old Man Luedecke joins the lineup, one of Canada's most intriguing roots singer-songwriters, known for his banjo playing and narrative-driven songs which are a mix of folk, bluegrass and pop. He is joined by Cassie and Maggie, an award-winning sibling folk duo from Nova Scotia. The sisters' musicianship is a blend of fiddle, piano, guitar, sibling harmonies in both English and Gaelic, and percussive step dance.

Multi-award winning Canadian troubadours Scott Cook and Pamela Mae tour for the first time as a duo. Dragkroka and Marine/Simonson/Wiskari are two Nordic groups bridging both hemispheres and traditions. Marine/Simonson/Wiskari will be joined by Maori anthropologist, taonga pūoro musician, and award-winning composer Rob Thorne (Ngāti Tumutumu, Tainui).

British Folk-Punk Ballad singer Jennifer Reid returns after her successful New Zealand tour, alongside singing trio Culverake, rounding out the international lineup.

Turkey the Bird and Hot Diggity are set to bring sparkle. Bazaruka, a seven-piece band from Wellington, reimagine Balkan and Greek traditions through a contemporary lens.

Waiata workshops will be running throughout the weekend under Hinekoia Tomlinson, blending voice training and vocal science with waiata's beauty and power. Butter Wouldn't Melt, Tom Cunliffe, Mice on Stilts, and Miriam McCombe provide a snapshot of the New Zealand folk scene.





Food & Beverage

Snowballs



Ingredients-

- ½ cups blanched almonds or macadamias or a mixture of the two
- 2½ cups shredded coconut or coconut thread

- ½ cup dried apricots
- 8 medjool dates pitted
- salt good pinch of
- 2-3 tablespoons honey
- lemon zest of 1
- orange zest of 1
- lemon juice of 1 use zested one above

Instructions-

Place 1½ cups of coconut (reserve the remaining 1 cup for coating the balls) and all remaining ingredients in a food processor and blitz until the mixture is well combined and comes together like a big clump of dough mixture. This will probably take about 2-3 minutes. Scrape down the sides of the food processor as necessary to make sure everything is well blended together.

Roll tablespoons of the mixture into balls then roll in the reserved coconut, coating the balls well. Store in an airtight container in the fridge until ready to eat, or offer as a gift. They are best eaten within a few days, but will keep for up to a week. They can also be frozen.

Notes- The snowballs can be made in bulk quantities, so you can make enough gifts for everyone in no time! They make the perfect little gift packaged up in a little box with ribbon tied around. They are so yummy and moreish, but they're gluten-free, refined sugar-free and dairy-free, so you don't even have to feel guilty about treating yourself! If you wanted to do something extra-special, you could also make these hazelnut chocolate truffles and give people a mixture of each!

Credit to Nadia Lim

Ginger Apple Fizz Mocktail



Ingredients-

- Thyme - 4 sprigs
- Fresh ginger (peeled & halved) - 3 cm
- Apple juice - 100 ml
- Ginger beer - 100 ml
- Soda water - 200 ml

Method-

- Muddle together ginger and 2 sprigs of thyme.
- Add apple juice and muddle again.
- Strain the muddled mixture over ice into 2 glasses.
- Add ginger beer and top with soda water.
- Garnish with a sprig of thyme.

credit to Woolworths

Everything you need to know about property

Property Hub

Raine & Horne®

2.95%

Find out how your property could feature as a four-page spread.

0800 900 700



What's inside

19
24
28
41

Property News
Property Statistics
Property Market
Home & Garden



ENQUIRIES / FEEDBACK / ADVERTISING:
E editorial@kumeucourier.co.nz
W Property-hub.nz

COVER PHOTO: Graham & Brendon -RAINE & HORNE
PRINT RUN: 22,500 copies, Treehouse Print

Property News

19

Christmas laws & legal laughs: From Aotearoa to the North Pole



Christmas is all about joy, but even the season of goodwill has its legal quirks. From pohutukawa-lined beaches to snowy rooftops, here's a look at the strangest holiday laws and stories—some close

to home, others from far-flung corners of the globe.

Deck the Halls... But check the law first

- Santa Claus banned – Tajikistan. Since 2013, Tajikistan outlawed Santa and Christmas trees. Definitely no “Ho Ho Ho” there.

- Snowball fights illegal – Colorado, USA. In Fort Collins, tossing snowballs can technically break local rules against throwing projectiles. Stick to snow angels!

- Puritans outlawed Christmas – England & Colonial America. Back in the 1600s, Puritans banned Christmas celebrations entirely, calling them sinful excess.

- Kiwi twist: Santa costume rules. In New Zealand, there's no law against donning the red suit in public—but if you're joining a Christmas parade or official event, you'll need to leave the Santa act to the designated star. Most parades enforce a “one Santa only” rule to keep the magic alive. Outside of events? Go ahead and spread the cheer—just don't block traffic with your sleigh.

- Holiday Pay rules – New Zealand. Under the Holidays Act, employees working on Christmas Day earn time-and-a-half plus a day in lieu. A gift that keeps on giving.

Quirky legal stories that'll make you jingle

- Santa Claus goes to court. An Ohio man legally changed his name to Santa Claus and fought charges of using a fake ID. Verdict? He was the real deal.

- Jingle Bells' lawsuit. A Manhattan lawyer sued their neighbour because a plastic reindeer played “Jingle Bells” nonstop. The court agreed: peace matters.

- Inmates vs. Christmas music. Arizona prisoners claimed nonstop holiday tunes were cruel punishment. The judge disagreed—joy is mandatory.

- Christmas pudding waivers

A London restaurant made diners sign waivers before eating pudding stuffed with silver charms. Liability never tasted so sweet.

- Kiwi Christmas party misconduct. Several NZ law firms faced disciplinary action after wild Christmas parties—reminding us that festive cheer doesn't excuse bad behaviour.

If Santa needed a lawyer in NZ... Does his sleigh need a WOF?, Is chimney entry trespass?, Does Rudolph need resource consent for flying over Auckland or a parking permit?, Does the Consumer Guarantees Act apply?

The verdict. Whether you're singing carols under the pohutukawa or firing up the Christmas barbie, these stories prove even the silly season has its legal side. So as you unwrap the pavlova debate this year, remember: Santa might need a Kiwi lawyer too. **The team at ClearStone Legal would like to wish you a Merry Christmas and a Happy New Year. See you in 2026**

Experience, Energy, and Efficiency in Real Estate



When choosing the right partners for your real estate journey, make sure Brendon Hodge and Graham McIntyre are at the top of your list. With a combined 35 years of industry experience and a proven record of high performance, they bring a powerful blend of knowledge, energy, and dedication to every campaign. Supported by a skilled team, they deliver exceptional service with thoughtful, well-considered

client care.

Providing a high-value, cost-effective commission and marketing package, and a promise “they will beat any comparable real estate agent's commission by 10%”.

Invite them to share their exclusive and absolutely unique marketing advantages and the most efficient commission structure available. Country Living Realty Limited t/a Raine & Horne Real Estate Kumeu - Hobsonville (Licensed REA2008)

Phone Brendon Hodge: 021 608 234

Phone Graham McIntyre: 027 632 0421

CLEARSTONE
LEGAL

Call now to discuss your legal needs

p: 09 973 5102
w: cslegal.co.nz

Kumeu Office
1A Tapu Road, Kumeu

Te Atatu Office
1/547 Te Atatu Road
Te Atatu Peninsula

To Sell or Buy Real Estate Contact:



Stephen Hudson- 0274 746 774

Executive Salesperson, Director and Company Owner of New Zealand Property Limited. If you are looking for an executive salesperson a proven business professional to market and sell your family home, holiday home, apartment, investment, development or commercial property, a licensed sales consultant who returns your calls, one who never lets a sales opportunity slip away, one who delivers results, please call me to discuss the options available to list and sell your property, please call me directly - 0274 746 774.

I bring my successful +35 years of entrepreneurial business background, nationwide and global business contacts, marketing, communication, sales and negotiation skills into New Zealand Real Estate. My experience is with both Residential and Commercial Property, Developments, Business, Companies, Trusts, Investment Property, Lifestyle Property, Holiday Homes, Exclusive Private Freehold Islands, extending to the building of houses, property developments and investment opportunities.

Experienced dealing with business issues and sensitive situations like deceased estates and separation this provides me with the knowledge and understanding of situations in a way to help you, to work through the process to list and successfully sell your home, or investment property for the best possible price and to help you to find and purchase your next property without any undue stress making the process as easy as possible. To my clients I offer my total commitment and negotiation skills with traditional vendor paid online marketing combined with my marketing and sales expertise.

Additional to vendor paid charged ads on Trademe, RealEstate.co.nz and OneRoof websites I can provide featured status for all of my listings free of charge until SOLD on the websites of NewZealandProperty.co.nz and Home.co.nz and SellYourProperty.co.nz

"Bringing Entrepreneurial Business & Negotiation Skills into Local Real Estate"



NEW ZEALAND PROPERTY™
Licensed REAA 2008

Stephen Hudson
Executive Salesperson & Company Owner
REAA Licensed & MRINZ

0274 746 774
StephansHome.co.nz



Residential, Commercial, Developments, Lifestyle, Rural, Waterfront

www.NewZealandProperty.co.nz

Auckland rental property report

The Auckland rental market is characterised by a softening, with an oversupply of properties and slower demand leading to higher vacancy rates and more competitive pricing from landlords.

With an increase in rental properties available year on year, and a corresponding reduction in demand due to migration and cost of living pressure, Landlords are facing increased competition to attract tenants, leading to price reductions and improved presentation. Let's review some of these factors:

Oversupply of rentals

- Platforms like Trade Me and realestate.co.nz show a significant increase in rental listings compared to 2023/4. The housing market is challenging, so unsold properties are moving into the rental pool.
- Properties are sitting on the market longer, with more viewings required to secure tenants.

Prices under pressure

- Rent is down 2% - 4% in some areas, landlords have to reduce rent by more than this, or offer incentives to attract tenants.
- Competition between landlords is driving prices down rents

Reduced rental demand

- YOY net migration is down in data just released last week from Stats NZ - March 2024 = 100,400 and March 2025 = 26,400, a decrease of 74%.
- Cost-of-living pressures and high interest rates mean tenants are staying longer in existing rentals.
- Fewer students and young professionals are moving around, limiting the demand for inner-city accommodation.

Higher landlord compliance costs

- High interest rates have increased mortgage repayments.
- Ongoing compliance requirements with the Healthy Homes Standards and other regulations continue to add cost and complexities.
- Insurance premiums and maintenance costs have risen.

It all adds to a challenging environment of finding the best possible long term tenant for the best possible yield for the landlord. This is an environment where the team at West Auckland Property Management thrive in providing accurate and timely advice to Property Owners wanting an easy and seamless Property Management solution.

For more information please call Graham McIntyre on 0276320421 or email graham@wapm.co.nz

Capital Gains Tax a headache or a headline

Capital gains on investment properties have been top of mind for some investors since Labour announced its capital gains tax plan.

While many will argue over the merits of the plan, it raises a fundamental issue regarding investment property - in order to tax capital gains there has to actually be capital gains to tax, and that's something that can no longer be taken for granted.

Looking at the residential property market, capital losses more likely have been a feature of the market since Grant Robertson tinkered with the lending caveats.

Residential property investors tend to buy properties at the cheaper end of the market because they usually provide better returns than more expensive properties. Most investors seek to gain a return in the 6 to 7% area.

To get an idea of the capital gains facing investors, the good folk at interest.co.nz tracked the changes to the Real Estate Institute of New Zealand's lower quartile selling price back to 2004.

In September this year, the REINZ's lower quartile price was \$590,000.

That's the price point at which 75% of sales are above and 25% are below, so it's a proxy for the most affordable, and for investors potentially the most lucrative, end of the market

A year earlier in September 2024 it was \$594,000. So a property purchased for the lower quartile price in September last year and resold at the lower quartile price in September this year would have suffered a capital loss of \$4000 (-0.7% of the original purchase price).

Going back two years to September 2023 the lower quartile price was \$590,000, the same as September this year, so no capital gain there but no loss either.

If you go back three years to September 2022, the lower quartile price was \$610,000, which would give a capital loss if it was sold now of \$20,000 (-3.3%).

Go back four years to September 2021 and the capital loss would be \$12,500 (-2.1%).

It's not until the property had been held for five years that it would make a capital gain and it's a reasonable one at \$90,000 (18%).

If the property had been held for six years the capital gain would be \$170,000, seven years and it would be \$210,000, eight years \$240,000, nine years \$255,000 and 10 years \$281,000 and so on.

These figures reinforce the old adage that property investment is a long-term game and should be considered as a part of a balanced investment portfolio.

At Raine and Horne we have the knowledge and capability to seek out and negotiate on the purchase of good long term investment property and to properly manage the investment with a low 6.5% property management fee.

Contact Graham McIntyre on 0276320421 - Raine and Horne Kumeu - Hobsonville

Thinking Property - Choose Raine and Horne Real Estate



Raine & Horne

Graham McIntyre
Licensed Agent
Kumeu | Hobsonville



027 632 0421
graham.mcintyre@kumeu.rh.co.nz Raine & Horne New Zealand PTY Ltd Licensed REAA(2008)

Fast & Free Rental Appraisals

Residential rental property advice that's timely, accurate, and measured, to ensure your property gets the attention required. It's a process that builds on 25 years of success and succession.

PHONE: **09 832 0832**
www.wapm.co.nz

 **West Auckland Property Management**

Personalised Property Management Solutions

Residential rental property advice that's timely, accurate, and measured, to ensure your property gets the attention required. It's a process that builds on 25 years of success and succession.

Ph 09 832 0832



Team Terry Jones: Knowledge is Power

‘Strive to provide you with an outstanding personal service throughout NZ and internationally’

With over 45 years of combined experience in the real estate industry, Terry and Janet Jones form a highly motivated, skilled, and experienced team dedicated to delivering exceptional personal service. Their extensive local knowledge and unwavering commitment have established them as well-recognised faces in many areas, particularly in North West Auckland, Hobsonville, West Harbour, Whenuapai, and Kumeu.

For more than a decade, Team Terry Jones has built a reputation for achieving outstanding results that consistently exceed their clients’ expectations. Their success is rooted in a deep understanding of the property market, superior negotiation skills, and a genuine passion for helping people realise their real estate goals. They take the time to understand each client’s unique needs and aspirations, offering tailored advice and support throughout every stage of the buying or selling process.

Why Choose Team Terry Jones?

- Trustworthy Professionals: Your property is a significant asset. Terry and Janet approach every transaction with the utmost integrity and respect, ensuring your interests are always their top priority.
- Strong Negotiators: Their expert negotiation skills are key to securing premium results, whether you’re buying your dream home or selling for maximum value.
- Deep Local Expertise: Years of living and working in the area ensure they provide up-to-date market knowledge and strategic advice.
- Outstanding Service: Known for going above and beyond, Team Terry Jones delivers a seamless and stress-free journey in your real estate experience.
- Choosing the right real estate agent is one of the most important decisions you’ll make regarding your property.

Terry and Janet chose NZ Sotheby’s International Realty for their values, professionalism, and point of difference.

Discover how their knowledge and service can work for you. Call team Terry Jones

Team Terry Jones

30 years of Experience.
Servicing Local & Global.

Terry and Janet Jones

Lifestyle Residential Development
M +64 27 492 0529
terry.jones@nzsir.com

New Zealand

Sotheby's

INTERNATIONAL REALTY

Brendon Hodge

A well-known presence in the Northwest community, Brendon Hodge has lived locally for 27 years and brings over 13 years of real estate expertise to the region. His strong market knowledge, steady approach, and commitment to high-quality service have earned him the trust of buyers and sellers alike.

Brendon is now working full-time from the Raine & Horne office at 327 Main Road, Kumeu, continuing to serve the community he knows exceptionally well.

“I’m level-headed, meticulous, and always working hard to deliver the best outcomes for my clients,” says Brendon. “Real estate is about people as much as property, and I take great pride in providing proactive, high-quality service every step of the way.”

Backed by the trusted Raine & Horne brand, Brendon remains dedicated to guiding clients through the property market with confidence and clarity.

“I value the trust my clients place in me and am committed to delivering a smooth, successful experience.”

Brendon Hodge – 021 608 234
brendon.hodge@kumeu.rh.co.nz

Raine&Horne.

Brendon Hodge

Licensed Sales Person

m 021 608 234
brendon.hodge@kumeu.rh.co.nz
327 Main Road, Kumeu, NZ 0810
Raine & Horne – Kumeu | Hobsonville Country Living Realty Ltd Licensed REAA (2008)

VODANOVICH

LAW

SALES & PURCHASE OF REAL ESTATE
RELATIONSHIP PROPERTY | BUSINESS STRUCTURES
POWERS OF ATTORNEY | WILLS & TRUSTS
COMPANY & EMPLOYMENT LAW

PLEASE CONTACT IVAN

ivan@vlaw.co.nz 09 412 8000
4a Shamrock Drive Kumeu, Auckland

Make sure to do your due diligence when buying a property

When buying a property, it is recommended to have a due diligence clause in your agreement. This will allow you a period of time to conduct inspections, surveys, and assessments on the property. You can also engage professionals such as building inspectors, surveyors, and lawyers to scrutinise the property’s condition, title, permits, and any other relevant documentation.

The purpose of these investigations is to uncover any potential issues or hidden problems that may affect the value or desirability of the property. This may include whether the property is in a flood zone and whether buildings on the property are properly consented. If you discover any significant concerns, you have the option to renegotiate the terms of the purchase with the vendor or withdraw from the agreement altogether.

It is advisable to consult with a lawyer before signing an agreement to purchase a property to draft a comprehensive due diligence clause tailored to your specific needs and circumstances. For any assistance with this or any other legal issue you can contact Kemp Barristers & Solicitors at info@kempsolicitors.co.nz or 412-6000..

KEMP BARRISTERS & SOLICITORS

your local team of legal experts

Property Law
Litigation
Family & Relationship Law
Wills & Estates
Commercial Law
Trust & Asset Protection

info@kempsolicitors.co.nz
09 412 6000
25 Orah Road Kumeu

PRIVATE RESIDENCE

RESIDENTIAL PROPERTY MANAGEMENT

- Full management
- One off Letting
- Rental advisory and appraisals
- Locally based, service all of AKL

022 6933 545 | www.privateresidence.co.nz

Local Lawyers,
Helping Develop &
Grow West Auckland
Business & Community

smithpartners.co.nz | 09 836 0939

smith

AND PARTNERS

LAWYERS

Henderson Reeves

creating smart legal solutions

Property • Disputes • Family • Wills

Taina Henderson 027 537 9222
Shelley Funnell 027 537 9221
Amie Wallwork 021 421 336

www.hendersonreeves.co.nz

LAND LAW

CLIENT CENTERED CONVEYANCING

CONVEYANCING - SALE or PURCHASE FROM
\$899 plus GST & disbursements Call now 022 1077 800
office@landlawnz.com www.landlawnz.com

Area Property Stats

PROPERTY-HUB.NZ

Every month Raine & Horne Kumeu assembles a comprehensive spreadsheet of all the recent sales in the area that reviews the full range of Residential and Lifestyle transactions that have occurred. To receive the full summary simply email the word “full statistics” to office@kumeu.rh.co.nz. This service is free from cost.

SUBURB	STREET	CV	BED	FLOOR AREA m2	LAND AREA m2	SALE PRICE
Coatesville						
	Ridge Road	\$1,500,000	0	0	10700	\$1340000
Helensville						
	Taylor Road	\$1730000	0	0	10400	\$1707000
	Kaipara Crescent	\$840000	3	140	736	\$870000
	Rongomai Street	\$770000	3	0	304	\$788000
Herald Island						
	The Terrace	\$1,750,000	4	170	908	\$1,750,000
Hobsonville						
	Hobsonville Pt Rd	\$660000	2	83	0	\$620000
	Clark Road	\$910000	3	120	170	\$930000
	Harbourside Parade	\$650000	0	0	255	\$688888
	Joshua Carder Dr	\$1125000	3	116	212	\$1080000
	Sioux Road	\$1125000	3	0	196	\$1227000
	Kota Lane	\$1375000	5	227	311	\$1425088
	Mapou Road	\$1075000	3	0	245	\$1120000
	Autumn Blaze Stt	\$1375000	4	200	247	\$1260000
	Saltmarsh Rd	\$1045000	2	110	170	\$860000
	Onekiritea Rd	\$710000	2	76	0	\$665000
	Desalt Drive	\$1025000	3	146	180	\$1050000
	Onekiritea Road	\$710000	3	175	248	\$1260000
	Wiseley Road	\$1600000	4	0	1012	\$1460000
	Sidney Wallingford Way	\$960000	3	0	0	\$1030000
	Hobsonville Pt Rd	\$600000	1	60	0	\$575000
	Aviation Drive	\$1525000	4	0	385	\$1500000
	Waita Lane	\$1200000	3	162	362	\$1319000
	Station Street	\$1125000	3	196	208	\$1205000
	Toanui Road	\$1500000	4	0	385	\$1640000
	Onekiritea Road	\$630000	1	66	63	\$609500
Huapai						
	Paihere Street	\$690000	0	0	0	\$1490000
	Malbec Place	\$1275000	5	0	871	\$1370000
	Merlot Heights	\$1275000	3	0	610	\$1074500
	Remana Crescent	\$1250000	4	204	600	\$1480000
Kumeu						
	Fred White Drive	\$1325000	4	212	606	\$1275000
	Moemoea Avenue	\$1075000	4	0	358	\$1020000
	Konoba Avenue	\$1000000	4	0	215	\$969000
	Barrels Close	\$1075000	4	161	432	\$1090000
Massey						
	Don Buck Road	\$840	4	160	523	\$830000
	Arlette Place	\$950000	3	0	771	\$915000
	Moire Road	\$1125000	5	180	951	\$1225000
	Allington Road	\$990000	3	133	607	\$980000
	Loughanure Place	\$780000	3	92	379	\$765000
	Sarajevo Place	\$740000	3	0	0	\$550000
	Triangle Road	\$890000	3	0	532	\$836000
	Don Buck Road	\$740000	4	180	517	\$708000
	Aldern Road	\$910000	3	80	897	\$794000
	Halloran Place	\$740000	3	80	367	\$695000
	Red Hills Road	\$1950000	4	495	5384	\$2390000
	Triangle Road	\$720000	3	0	375	\$738000
	Paretao Street	\$380000	4	0	156	\$945000
	Bellringer Road	\$830000	3	0	506	\$760000
	Reynella Drive	\$910000	5	0	761	\$960000
	Rehia Road	\$1060000	3	0	809	\$910000
	Makora Road	\$1025000	3	179	1156	\$1150000
	Lilburn Crescent	\$730000	4	170	675	\$890000
	Karika Place	\$1130000	4	168	564	\$1100000
	Triangle Road	\$780000	3	0	455	\$794000
	Woodside Road	\$850000	3	130	1669	\$880000

SUBURB	STREET	CV	BED	FLOOR AREA m2	LAND AREA m2	SALE PRICE
	Claverdon Drive	\$970000	4	100	607	\$822565
	Puhikawa Street	\$380000	3	0	134	\$840000
	Glenfinn Place	\$750000	3	0	561	\$750000
	Royal Road	\$1225000	3	240	837	\$1165000
Riverhead						
	Princes Street	\$1350000	4	0	810	\$1381000
	Canoe Lane	\$1650000	4	0	800	\$1835000
	Barrett Road	\$2675000	5	0	10900	\$1872000
	Mill Flat Road	\$2075000	0	0	15300	\$2780000
Taupaki						
	Amreins Road	\$1225000	0	0	21500	\$1370000
Waimauku						
	Rosella Grove	\$990000	4	128	1131	\$1150000
Waitakere						
	Mcentee Road	\$875000	2	71	875000	\$882,500
	Te Aute Ridge Road	\$900000	3	0	50000	
West Harbour						
	Crosby Road	\$1250000	3	90	849	\$1062500
	Elizabeth Drive	\$1250000	3	92	647	\$908000
	Hogarth Rise	\$1255000	5	270	832	\$1300000
	Bridgehead Cove	\$1070000	4	220	450	\$1057500
	Woodhouse Place	\$1150000	4	0	0	\$1150000
	Cherub Place	\$1055000	3	180	0	\$849000
	Lagoon Way	\$965000	3	120	0	\$940000
	Vermeer Place	\$1525000	4	249	709	\$1690000
Westgate						
	Mairehau St	\$540000	0	0	224	\$376000
	Tarapuka Road	\$900000	3	0	0	\$820000
	Waekahu Road	\$980000	3	161	208	\$960000
	Neinei St	\$540000	0	0	0	\$420000
	Kiekie St	\$780000	3	100	156	\$860000
	Greenbrier Street	\$530000	4	0	153	\$920000
	Greenbrier Street	\$890000	4	125	153	\$920000
	Westgate Drive	\$1100000	3	180	210	\$987000
	Cinnabar Place	\$1050000	3	171	500	\$980000
Whanuapai						
	Whenuapai Drive	\$1300000	3	212	379	\$1310000
	Kauri Road	\$1175000	3	103	1452	\$1235000
	Totara Road	\$1075000	4	211	166	\$1045000

DISCLAIMER: These sales figures have been provided by a third party and although all care is taken to ensure the information is accurate some figures could have been mis-interpreted on compilation. Furthermore these figures are recent sales over the past 30 days from all agents in the area.

Graham McIntyre on 027 632 0421

Brendon Hodge on 021 608 234

Country Living Realty Limited T/A Raine and Horne Kumeu
- Hobsonville. Licensed REAA (2008).

Raine & Horne Kumeu also provide statistical data FREE from cost to purchasers and sellers wanting more information to make an informed decision. Phone me today for a FREE summary of a property and surrounding sales, at no cost and no questions asked. Graham McIntyre 027 632 0421 *Available for a limited time. Conditions apply.

Raine&Horne®

This page is sponsored by Raine & Horne Kumeu - Hobsonville
Phone 0800 900 700 Country Living Realty Ltd Licensed REAA (2008)



November 2025 market wrap

The New Zealand property market is beginning to show signs of stabilisation. The latest Cotality Home Value Index recorded a 0.2% rise in national median values in October, following a 0.1% lift in September. These may be small movements, but they mark the first consecutive increases after months of decline - a signal that mortgage rates and improving buyer confidence is starting to influence the market.

Regionally, the picture remains mixed. Auckland saw a slight fall of 0.2%, Hamilton held steady, while Tauranga and Wellington edged up 0.2%. Christchurch rose 0.4%, and Dunedin led the main centres with a 0.7% increase. Several provincial centres - including Nelson, Queenstown, and Invercargill, posted gains above 1%, while areas such as Palmerston North, New Plymouth, and Whangārei experienced modest declines.

With shifting house prices and changing economic conditions - even the smallest movement in interest rates can have a big impact on your repayments and long-term interest costs.

This is why refixing, restructuring and refinancing your lending strategically and at the right time can be a game-changer.

Over the past month, we've seen standout bank offers and competitive incentives, and with the recent OCR announcement, new windows of opportunity have opened. First-home buyers may find conditions more favourable, and existing homeowners may be able to reassess their lending structure to ensure their mortgage is aligned with their goals heading into 2026.

As we approach the new year, it's the perfect time to review your strategy and check your mortgage is working for you. If you haven't already done so - Get in touch for a free, zero-obligation chat!

I'm here to help you secure the best rates and terms, improve cashflow, reduce interest and plan your next financial steps with confidence.

Call Ben Konings
Your Local Mortgage Adviser
0204 1122 481
ben@mortgagesupply.co.nz



Your Partner In Property And Finance

Call Ben for personalised mortgage advice to help you achieve your property and financial goals!

- First Home Buyers
- Upsizing & Downsizing

- Property Investors
- Repayment Strategies

Ben Konings
Your Local Mortgage Adviser
0204 1122 481
ben@mortgagesupply.co.nz
www.mortgagesupply.co.nz

Ben Konings gives financial advice through Fearless Financial Limited trading as The Mortgage Supply Co.

Relax.

We've Got 2026 Covered.

Start the New Year knowing your property is in expert hands. At West Auckland Property Management, we combine 25 years of local knowledge with a personal, results-driven approach to make property ownership effortless.

We're invested in your investment.

Give our Property Experts a call today to find out how we can make your property work for you

West Auckland Property Management

09 832 0832
027 499 8415
office@wapm.co.nz

Office locations:
2 Clark Road, Hobsonville
327 Main Road, Kumeu



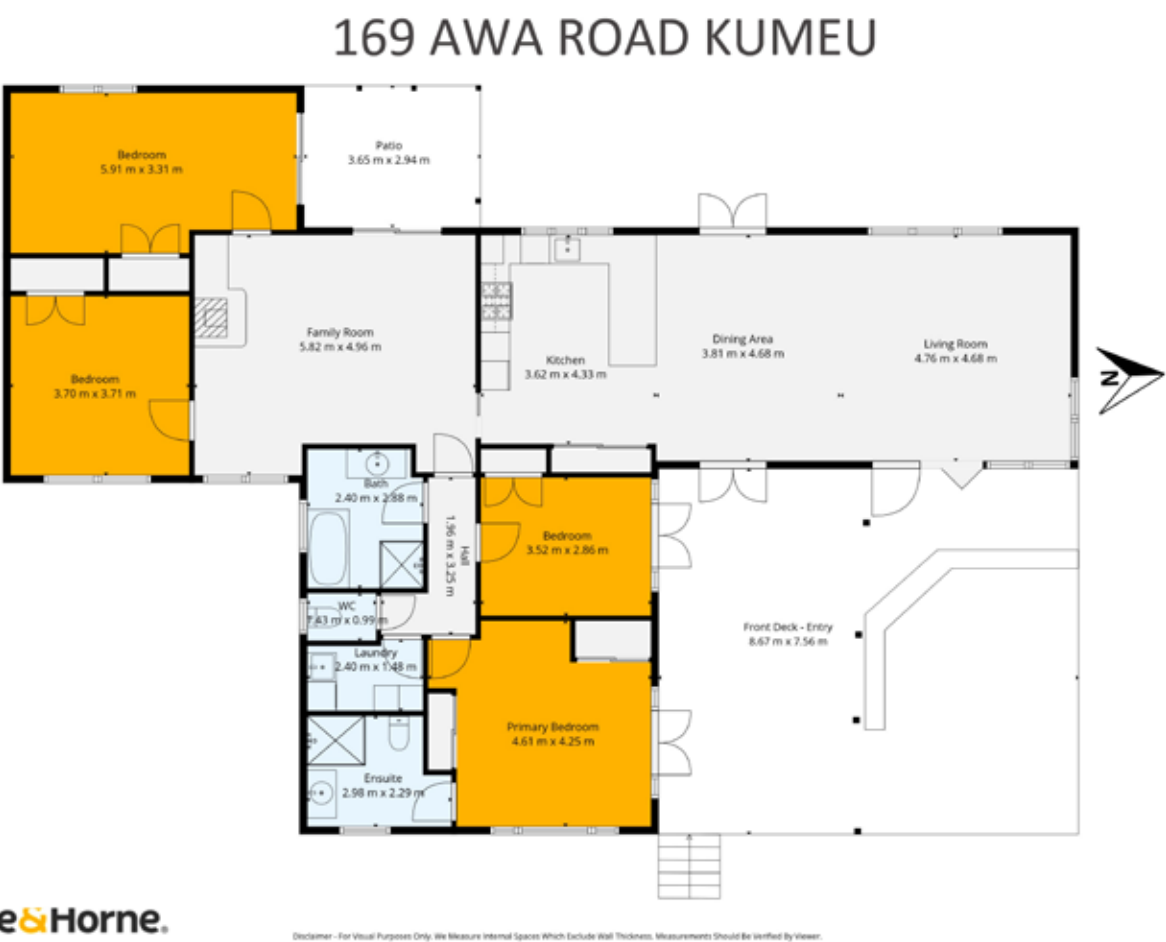
A World Away – Home with Income

169 Awa Road, Kumeu

A tranquil and quiet valley, away from the bright lights, and the countless cars, and yet close enough for a dinner out or a quick dash for milk. Welcome to Willow Tree Cottage. A home that entangles lifestyle with convenience and the mixed comforts of uncompromised alfresco living with access from Dining, Lounge and Bedrooms. A home that is two: A four bedroom, two bathroom, two lounge single living family homestead 186sqm, and... Off a separate

drive, a stand alone home offering three bedrooms, one lounge, one bathroom 86smq being a home or an income. Independent appraisal range is around \$700 per week for this.

The landscaping is impressive, stepping you down to a mixture of accessory buildings and converted stables now transformed into the ultimate lifestyle zone, complete with a home gym, bar area, and chill-out space for entertaining or unwinding.



Featuring:

- 7 bedrooms
- 3 bathroom
- 2 living
- 3 garage
- Land area 4.05 Hectares
- Floor area 275 sqm
- Lifestyle Property
- Two houses
- Man cave



For more information on this property call:
Graham McIntyre on 027 632 0421
or email: graham.mcintyre@kumeu.rh.co.nz

Country Living Realty Limited T/A Raine and Horne Kumeu
- Hobsonville. Licensed REAA (2008).



Be In For Christmas Affordable Three Bedroom

1 Neta Grove, Henderson Auckland

First home buyers, downsizers, investors or families this 116m2 approx freehold 1 level townhouse on a 292m2 approx section is available for immediate possession and is priced to meet the market for a quick sale. The dwelling has been refreshed inside with new carpets and newly painted inside and out and is now ready and waiting for new owners. The current rate-able value is \$790,000 however the owners do not want this lovely home hanging around on the market too long and are looking to sell in the low to mid \$700's., of course open to all genuine offers for serious consideration. There is a nice open

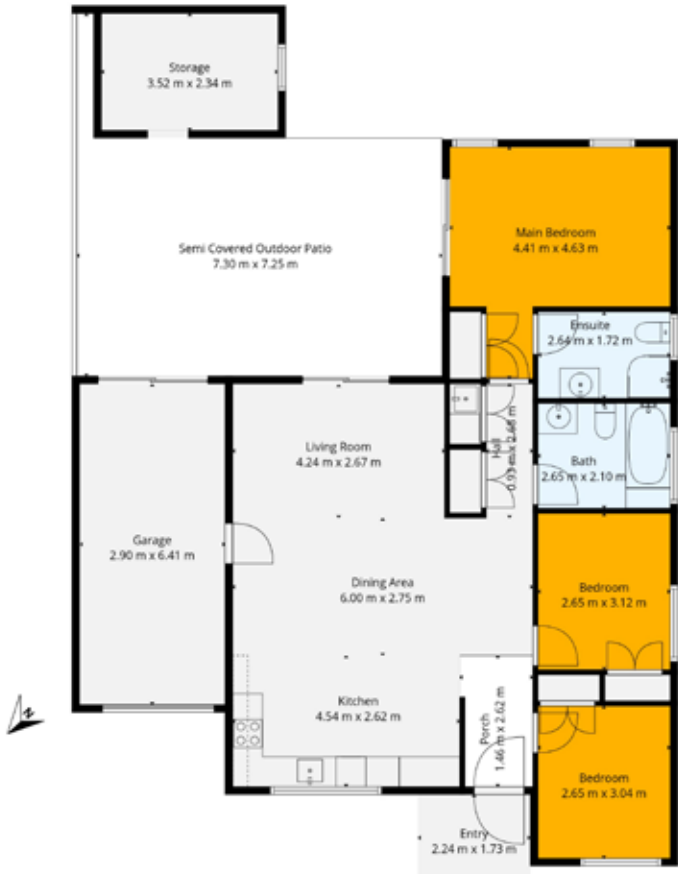
field park across the road to enjoy and a bonus of only having the Sturges Road train station only three minutes walk away. Summerland Primary, Henderson Intermediate and Waitakere College are zoned nearby plus other schools are also available. view. Access to West City and Northwest Mall are only a short driver away.

Brendon Hodge on **021 608 234**
or email: **Brendon.Hodge@kumeu.rh.co.nz**
Country Living Realty Limited T/A Raine and Horne Kumeu - Hobsonville. Licensed REAA (2008).





1 Neta Grove Henderson



Raine & Horne

Disclaimer - For Visual Purposes Only. We Measure Internal Spaces Which Exclude Wall Thickness. Measurements Should Be Verified By Viewer.



Featuring:

- 3 Bedroom
- 1 bathrooms
- 1 Toilets, 1 living, 1 ensuite
- Land area 292 sqm approx
- Floor area 116 sqm approx
- 1 Garage
- Townhouse
- Freehold

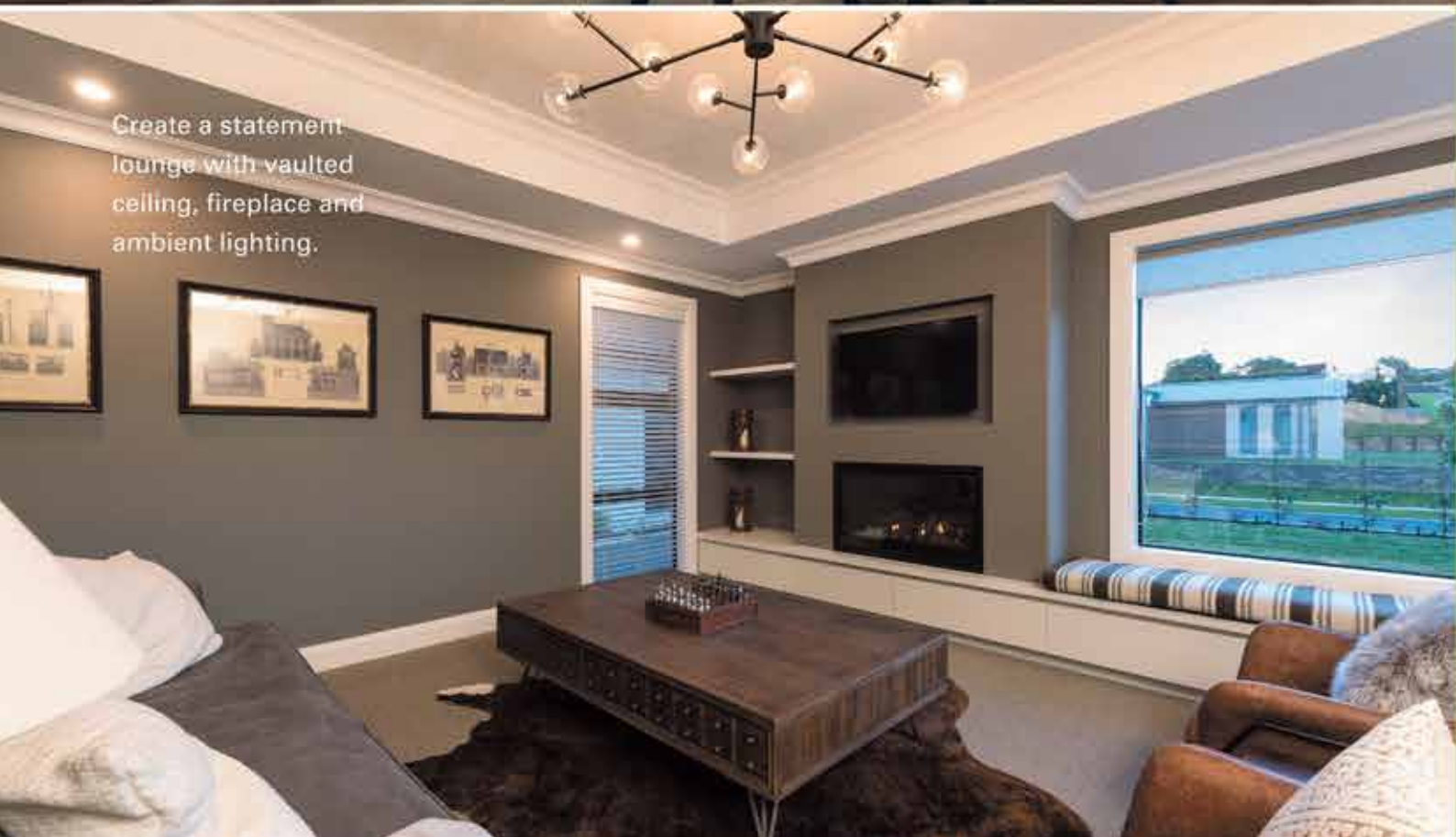


Feature
Lighting

Gable
Windows

Hidden
Scullery

Custom
Island



Create a statement
lounge with vaulted
ceiling, fireplace and
ambient lighting.

BRING US YOUR WISH LIST

We can make your new
home unique to you!

No matter what you're looking for,
bring us your ideas and we'll work
with you to create a home uniquely
suited to you and your lifestyle.

If you're thinking of building, talk to your
local GJ's team today about building you a
home that we can all be proud of!

Bring us your wish list to start your new
home journey today.

09 412 5371 / gjgardner.co.nz

G.J. Gardner. **HOMES**



14 Malbec Pl, Huapai

Hello Summer - lawn, alfresco, fully fenced.

Are you looking for a home that will deliver a Summer that will be remembered forever, then this is a calling for you to act. An outstanding 697sm (more or less) of land, with generous grassing, off-street parking, and fully fenced to ensure enjoyment, safety and easy convenience.

Get the sun-sail up, and the portable pool in place, this is a suntrap for all ages, with north west patio and boundary plantings that pop colour and contrast.

This modern near new weatherboard home is presented to a high standard offering generous living spaces, uncompromised alfresco off central lounge and separate snug off the kitchen. One primary level with a step up to the passageway.

For more information on this property call:

Graham McIntyre on **027 632 0421** or email:

Graham.mcintyre@kumeu.rh.co.nz

Country Living Realty Limited T/A Raine and Horne Kumeu - Hobsonville. Licensed REAA (2008).



Featuring:

- 3 bedroom
- 2 bathroom
- Land area 698 sqm
- Floor area 174 sqm
- 1 ensuite, 2 living, 1 dining, 2 toilet
- 2 garage
- Close to shops, library, cafes, schools, parks
- Situated in Huapai and off Matua Road



A Quintessential Kiwi Christmas in Your Outdoor Living Space

Nouveau

Alfresco Outdoor Reclining Lounge Setting 6 Piece



SKU: 2027646 **\$2499**

Nouveau

Palau Outdoor Dining Bench Setting With Chairs 7 Piece



SKU: 2044106 **\$2129**

Nouveau

Carmel Outdoor Dining Setting 5 Piece 1500mm



SKU: 2033858 **\$979**

Weber

Family Q3100N+ Gas BBQ LPG Flame Red



SKU: 2016390 **\$1079**

Broil King

Porta-Chef 320 Gas BBQ 3 Burner



SKU: 288992 **\$869**

Grilled

Boston 4 Burner Dark Green



SKU: 2053413 **\$799**

Nouveau

Market Umbrella 4.5m Double Stone



SKU: 2054104 **\$369**

Nouveau

Market Umbrella 2.7m Olive



SKU: 2054103 **\$219**

Nouveau

Market Umbrella 3m Black



SKU: 2054117 **\$99⁹⁹**

**Big Range,
Low Price,
Local Advice.**

Mitre 10 MEGA Westgate & Henderson
Northside Drive & Lincoln Road
Monday to Sunday 7am to 6pm

@MEGAHenderson

@megawestgate

@mitre10.mega.henderson



**MITRE 10
MEGA**

**WESTGATE &
HENDERSON**



41

Home & Garden

Field Homes: Your partner for the New Year

As we approach the end of the year, all of us at Field Homes wish you a joyful holiday season and a Merry Christmas. We look forward to the promise of a Happy New Year and the new beginnings it brings. This festive season coincides with an exciting shift in the property market. With interest rates softening, we are seeing revived activity and renewed confidence. For those who have been considering a project, now is an opportune time to explore your options. As an award-winning Registered Master Builder, we are perfectly positioned to help you navigate this revitalised landscape. Whether you are looking to unlock the potential of your existing section or are ready to build your dream home, our expertise turns vision into reality. Subdividing and

building is a powerful way to maximise your investment.

For a firsthand feel of our quality and workmanship, we invite you to see our current project at 36-46 Moire West, Massey—a 7-lot subdivision with a mix of duplex and standalone homes. Let's build a brighter future together. From our family to yours, we wish you a wonderful holiday and a prosperous start to the New Year.

Mastercraft Kitchens



by The Kitchen People offers custom cabinetry with over 30 years of expertise. Riverhead owners Mark and Leanne Gallagher ensure a streamlined experience for new builds and renovations. A recent project highlight

is a breathtaking luxury kitchen completed at a Kumeu country estate, featuring dramatic natural stone. We are full-service, crafting solutions for every room. Visit our Design Centre at 177 Millwater Parkway, Silverdale, or view our portfolio at www.kitchenpeople.co.nz



Award-winning Master Builder
creating sustainable, high-quality homes for
modern living at affordable price.

Our Services:

- ✓ Design & Build
- ✓ Subdivision
- ✓ Relocatable Home

Talk to us today!

fieldhomes.co.nz

sales@fieldhomes.co.nz

021 0241 0368



MASTERCRAFT
KITCHENS

THE KITCHEN
PEOPLE

Modern Kitchens
CAREFULLY CRAFTED



Visit Our Design Centre

177 Millwater Parkway, Silverdale
(Closed from 23rd December - 12th January)

Schedule your FREE consultation on our website!

www.kitchenpeople.co.nz

Drain Ninjas



To any New Zealand homeowner with a septic system, its upkeep is as important as any other home maintenance task. Whether you've just purchased a property or lived with a septic tank for years, understanding how it works prevents costly repairs and environmental hazards. Neglect can cause foul odours, soggy lawns, and even full system failure. Regular maintenance keeps everything running smoothly and saves money long-term.

In this guide, we'll cover septic tank maintenance, warning signs, and landscaping tips to protect your system.

Regular septic tank inspections and cleanings

Septic tanks should be inspected every 6-18 months and pumped every 2-3 years, depending on usage and size. Routine checks catch small issues early and extend the life of your system.

Recognising the signs of septic tank issues

Watch for foul smells, slow drains, greener grass near the

tank or drain field, and pooling water. These are signs of possible failure and should be addressed immediately to avoid costly repairs.

Maintaining a healthy bacterial balance

A healthy septic system depends on good bacteria breaking down waste. Harsh cleaning chemicals can upset this balance. Use septic-safe cleaners and avoid pouring grease, coffee grounds, or non-degradable items down the drain.

Proper disposal of waste and household chemicals

Only biodegradable waste should go down your drains. Non-biodegradable materials and strong chemicals harm bacteria and clog pipes. Limit waste disposal use and never flush oils, medications, or chemical cleaners.

Landscaping and property management practices Plant grass or shallow-rooted plants above your system; tree or shrub roots can damage pipes. Avoid driving or parking on your septic area to prevent soil compaction and structural damage.

Regular maintenance + next steps

With consistent care, proper use, and mindful landscaping, your septic system will last for decades. A little proactive maintenance prevents major problems and protects both your investment and the environment.

Transforming backyards with Narellan Pools Auckland West



There's nothing quite like the joy of a backyard pool, a place where families come together, children create lifelong memories, and weekends feel like holidays at home.

Richard Pook, owner and pool builder of Narellan Pools Auckland West, is passionate about helping local families bring that dream to life. Proudly servicing the Auckland West community, Richard and his team design and install premium fibreglass swimming pools, all made right here in New Zealand. Every in-ground pool comes with a Lifetime Structural Warranty, giving families peace of mind for years to come.

As a locally owned and operated business, Narellan Pools Auckland West takes pride in creating outdoor spaces that suit each family's lifestyle. From compact courtyards to large backyards, Richard works closely with clients to design a pool that complements their home, with a wide range of modern shapes, colours, and features to choose from.

To find out more or book a free consultation, visit narellanpools.co.nz or contact the team at Narellan Pools Auckland West today 027 786 3970.

BRINGING DREAMS TO LIFE
WITH NARELLAN POOLS AUCKLAND WEST



Narellanpools

narellanpools.co.nz
0508 476 657

IN-GROUND
LIFETIME
STRUCTURAL
WARRANTY

On to it Garden Service

We offer all aspects of garden maintenance.

- Garden tidy ups
- Garden maintenance
- Planting
- Landscaping projects
- Waterblasting

We have been working for 23 years in the industry.

Call Calvin today on 0272 111 075



On To It Garden Services Ltd

Calvin Bates

0272 111 075
ontoitgardenservices@gmail.com

EVERYTHING TO DO WITH DRAINS 24/7

- ✓ Vacuum loading/suction ✓ Septic tank empty & council inspection
- ✓ Cesspit cleaning, pump chambers, grease trap cleaning
- ✓ Hydro excavation, pile holes ✓ Drain unblocking & root cutting
- ✓ CCTV locating & fault finding ✓ Drain repairs & maintenance

LOCALLY FAMILY OWNED
& OPERATED
drainninjas.co.nz

0800 4 NINJA 0800 4 64652
Email: admin@drainninjas.co.nz

Whenuapai Floral & Garden Circle

On a damp afternoon, more than thirty members were present at the last formal meeting of 2025. After plans for next year were discussed and usual business dealt with, member Marilyn Page was once again called upon to demonstrate the art of making simple yet elegant Christmas decorations for the home. First a wreath for the door with astelea curls, ribbon, conifer leaves and artificial flowers.

Next a table display including stems of alstroemeria, and succulents held in place with the aid of toothpicks, then a floral frothy concoction with bright red berries in a tall glass, and lastly some cones on a branch were prettied up with shades of red and green, with accents of silver and white, to adorn an empty fireplace. Excellent results and she made it all seem so easy.

If you would like to know more about our Club, and wish to join us next year, please phone Judy Garrity on 8335592. Meetings are held at 1 p.m. at 41 Waimarie Road, Whenuapai Village, on the second Thursday of the month with trips usually on the fourth Thursday. Entry fee is \$4 with another dollar per raffle ticket. Until next time, Happy Gardening and Happy Holidays from Mary Anne Clark

Waimauku Garden Club



It was another awesome day out in October to visit Highwic House in Epsom where we were welcomed with a lovely morning tea served on vintage china.

We heard the fascinating history of the early NZ gothic mansion and gardens which were established over 150 years ago. The house was originally built in 1862 for Alfred Buckland, a wealthy colonial settler and landowner. It had a few extensions as the family grew which included 21 children. We got to explore all the rooms which were furnished in that period. Highwic houses a major collection of early Auckland landscape paintings. The gardens were lush and pretty. We travelled to Bastion Point to enjoy the panoramic view over Auckland Harbour at the Michael Joseph Savage memorial gardens which were stunning. We had lunch at a choice of cafes along Mission Bay. On our journey back we visited the tranquil Fukuoka Garden at Western Springs featuring traditional Japanese elements such as a waterfall, pond, stone arrangements and bonsai trees. A peaceful retreat to sit and reflect.

Feel free to contact any of us: Ann(0210357406), Gail(021344070), Maree(0274963006), Moira (027498154), Sandi (0273184514).

Summer stench? It might be your septic tank

Summer in New Zealand is all about long days, BBQs, and visitors – but if there’s a mysterious pong drifting across your section, it’s not the sausages burning. Chances are, your septic tank is trying to tell you something.

Hot weather and extra guests are a recipe for septic overload. When a tank is already near capacity, a few more showers, extra laundry, and extra flushes can push it over the edge. The result? Bad smells, slow drains, gurgling pipes, or even wastewater backing up into your home or yard.

Here’s what could be happening:

Built-up sludge: Solids naturally settle in your septic tank over time, taking up space. If the tank isn’t emptied regularly, there’s less room for new wastewater. In a tank with a soakage field, excess solids can escape into the outlet and clog pipes or the soakage system. In a holding tank, the wastewater simply fills up, and once it’s full, it can back up or overflow – and that’s when the smells appear.

Blocked filters or outlets: Heat and heavy use can stir things up inside the tank, creating blockages that slow down how wastewater leaves the tank (if it has a soakage field).

Overloaded soakage fields: For tanks connected to soakage systems, saturated or compacted ground



OUR PROFESSIONAL TEAM IS HAPPY TO HELP WITH:

- Septic tank inspections, empties and cleans
- Wastewater system maintenance and disposal
- Grease trap cleaning

We can help you ensure you comply with Auckland Council Healthy Waters requirements and the relevant paperwork.

We are proudly NZ-owned with a friendly team who truly care about doing a good job for you.

0800 493 768
www.hydrovac.co.nz



can prevent effluent from draining away, causing surface pooling or odours.

The fix? HydroVac can empty your tank, clear blockages, and inspect your system – whether it’s a traditional septic or a holding tank – to make sure it’s summer-ready. Regular emptying (every three to five years for most homes, depending on size and use) keeps your system working properly and odour-free.

If you’re hosting guests over summer or heading away on holiday, now’s the perfect time to book a service. You’ll avoid unpleasant smells, prevent backups, and reduce the risk of costly repairs.

Our teams cover Auckland, making the process quick, tidy, and hassle-free. So if your summer breeze isn’t smelling quite as fresh as it should, give HydroVac a call – we’ll make sure you can get back to enjoying the sunshine without holding your nose.

HydroVac: 0800 493 768, service@hydrovac.co.nz, www.hydrovac.co.nz

Andrew Shone.

Carpentry & Building Services.

Small alterations , Fencing , Decking & General Building repairs.

Free quotes

Ph 021 999 542 or 412 6213

Email shonebuilder@xtra.co.nz

Fast & Free Rental Appraisals

Residential rental property advice that’s timely, accurate, and measured, to ensure your property gets the attention required. It’s a process that builds on 25 years of success and succession.

PHONE: 09 832 0832

www.wapm.co.nz

West Auckland Property Management

ESTD 2004

TACKLE PLUMBING LTD

Certifying Plumber

Plumbing Solutions You Can Trust

021 581 703 – email: rwkennerley@xtra.co.nz

**wallerprojects**

MARK WALLER

M: 021 802 845

E: mark@wallerprojects.co.nz

A: The Hangar, Catalina Bay, 2/2 Boundary Road, Hobsonville Point

W: wallerprojects.co.nz

AWARD WINNING DESIGN & BUILD



Burnetts

SEPTIC & WATER TANK CLEANING

YOUR SEPTIC TANK SHOULD BE CLEANED EVERY 3 YEARS (AVERAGE FAMILY OF 4)

WE SERVICE ALL AREAS

PROMPT, PROFESSIONAL SERVICE WITH 30 YEARS EXPERIENCE

PHONE: 09 412 9210 OR 027 492 4494



A quintessential Kiwi Christmas in your outdoor living space

There's something truly special about a Kiwi Christmas – long sunny days, the smell of the barbecue, and family and friends gathered outdoors sharing in good food and laughter. As the year winds down, it's time to make the most of your outdoor living area and turn it into the heart of your festive celebrations.

Start by setting the scene. Comfortable outdoor furniture, a shady umbrella or pergola, and a welcoming table are the foundations of relaxed summer entertaining. Add a few touches of Christmas cheer – twinkling lights, vibrant cushions, and lush greenery – to create that perfect festive atmosphere. Keep things simple and stylish with natural tones and pops of red or gold that nod to the season without overpowering the laid-back Kiwi vibe.

No Christmas feast is complete without great food hot off the grill. Fire up a quality barbecue, stock the chilly bin, and let the aromas of sizzling seafood, steak, and seasonal veggies set the mood. If you're feeling creative, try a pizza oven or smoker for something a little different this year.

And when the sun sets, keep the celebration going with outdoor heaters or a fire pit – the perfect way to stay cosy while sharing dessert and stories under the stars.

Everything you need to create your dream outdoor Christmas – from furniture and décor to barbecues, lighting, and plants – can be found at Mitre 10 MEGA Westgate and Henderson. Their friendly team can help you bring your vision to life, whether you're refreshing your deck, upgrading your grill, or simply adding some festive sparkle.

Make this Christmas one to remember – relaxed, joyful, and beautifully Kiwi, right in your own backyard.



Grant Castle

P (09) 412 8239 | 23 Wookey Lane, Kumeu
M 027 299 7054 | E castlepanelbeating@orcon.net.nz

Summer's Here – Time to Protect Your Home



With summer finally here, it's a great time to give your home some TLC after a long, wet winter. Auckland's sun, wind, and rain can be tough on paintwork, leaving peeling paint or soft, rotting timber. Taking action now can save you from more expensive repairs down the track.

At Focus On Painting, we've got over ten years' experience helping Kiwi homeowners restore and protect their homes. Whether it's a full exterior repaint or just a few touch-ups, Brad and his team know how to prep surfaces properly and use paints designed to handle New Zealand's unique weather.

What makes us different is our hands-on approach. There are no subcontractors, so you deal with the same tidy, reliable team from start to finish. We turn up on time, keep the work area clean, and always deliver a professional finish.

Check out examples of our work and read reviews from happy customers at facebook.com/focusonpainting/reviews. Free quotes are available.

To get started, call or text Brad on 021 756 890 or email focusonpainting@gmail.com.



Brad 021 756 890
focusonpainting@gmail.com
focusonpainting

HOUSE PAINTING
INTERIOR / EXTERIOR / ROOF

FREE QUOTE & 3 YEAR WARRANTY*

*Conditions Apply

Laser Plumbing & Roofing Whenuapai – Your plumbing, roofing & drainage experts in West Auckland

Here we are knocking on the door of Christmas. This year has certainly flown by.

If you have any niggly plumbing issues that you just haven't got round to fixing, then give us a call and we can get it sorted before Christmas.

Dripping taps, a slow draining sink, blocked toilet, low water pressure, clogged waste disposal, backflow issues. These are just some of the common plumbing problems you can experience in your home or business. We have a great team of maintenance plumbers who can easily remedy these frustrating issues, on time and hassle free.

Here at Laser we also specialise in all your long run/iron roofing needs...from roof repairs to complete roof replacements, gutter cleans, repairing and replacing gutters, spouting and downpipes. Whatever your needs, one of our experienced roofing team will offer you the right solution.

Our dedicated and knowledgeable team is focused on providing excellent service to our customers. No job is too big or too small for Laser Plumbing Whenuapai, so give us a call today on 09-417-0110 or email us on whenupai@laserplumbing.co.nz

We are open five days a week from 7:30am-4:30pm and conveniently located at Unit 4, 3 Northside Drive, Westgate. Visit our website whenupai.laserplumbing.co.nz for more information.



● PLUMBING	● DRAINAGE	● ROOFING
Renovations Waste Disposal Leaking Taps High Water Bill Hot Water Cylinder Back Flow Prevention New House Plumbing Burst Pipes Maintenance & MORE	Septic Tank Council Inspections (Auckland Council Approved) Septic Tank New Installations Septic Tank Repairs New Drainage Drain Repairs / Replacements Drain Unblocking Stormwater / Sewer Systems Cesspit Installation / Repairs & MORE	Long Run Roofing Downpipes Flashing Work New Roofs Roof Repairs Roof Maintenance Gutter Replacements Gutter Repairs

09 417 0110

whenupai@laserplumbing.co.nz





SERVICE CENTRE

EOIN STUART
Phone 09 412 5900 | Mob 022 639 0274
338 Main Road Huapai - Kumeu, Auckland 0810
autoworxnz@outlook.com

ANYTIME PEST CONTROL

FLIES, ANTS, COCKROACHES, FLEAS
RATS, MICE, SPIDERS, WASPS ETC.
WEEDSPRAYING

KEVIN MORRIS REGISTERED TECHNICIAN

PHONE: 09 411 7400 MOBILE: 027 277 7143



Qualified & registered building company in your neighbourhood!

Contact us for your next project nearby and get

10% OFF + FREE quote

Renovations · House extensions · Residential repairs · Outdoor entertainment · General maintenance

021 315 694 www.crea.co.nz

Building a minor dwelling with GJ



Building a Minor dwelling is just about to get a whole lot easier! With the new regulations coming into place in early 2026, now is the time to start thinking about how a minor dwelling could benefit you.

- housing your extended family
- owning your first home
- creating passive income
- adding value to your property

We offer a range of minor dwelling plans, as well as the capability to incorporate your ideas, and customise plans to suit your needs. G.J. Gardner gives you peace of mind, taking care of the project from start to finish, including all site services, meaning no hidden surprises.

Fully complying with the NZ Building code, you can rest assured in the comfort and long term performance of a brand new G.J. Gardner compact home.

With our proven systems and processes, we are able to provide certainty with pricing and the completion date of your project.

Enquire with GJ's Rodney West today



RYAN JACKSON
M: 027 498 6202
E: ryan@treehouseprint.co.nz
PO Box 133, Kumeu 0841 Auckland

Choosing the right ride-on mower - with STIHL SHOP Kumeu



Maintaining your lifestyle block or large property requires the right tools, and choosing the perfect ride-on lawnmower is key to getting the job done efficiently. Whether you're dealing

with rolling hills, large lawns, or tricky landscaping, the right mower will make taking care of your property a breeze. Three top brands to consider are Cub Cadet, Hustler, and Walker, each offering distinct features suited to different needs.

Cub Cadet mowers are known for their versatility, offering durable, powerful models ideal for smaller to mid-sized properties. They handle uneven terrain well and provide a smooth, reliable cut.

Hustler mowers are designed for larger properties, with Zero Turn technology that ensures quick, agile manoeuvrability around obstacles. Their powerful engines and wide cutting decks make them perfect for extensive lawns that require fast, efficient mowing.

Walker mowers excel in precision, making them ideal for properties with complex landscaping or narrow spaces. Their compact design and excellent grass collection system leave your lawn looking neat and well-maintained.

Choosing the right mower for your property can be tricky, which is where our expert, Craig comes in. With years of experience, Craig will visit your property to assess your lawn size, terrain, and specific needs. He'll provide expert advice and help you select the ideal mower, ensuring maximum performance, longevity and efficiency for your lifestyle block (and budget!)

Contact Craig today to schedule your FREE on-site appraisal and get the right mower for your needs. Or call in and see our team at STIHL SHOP Kumeu!

STIHL SHOP Kumeu is open Mon-Fr 8.30-5.30 and Sat 9-4



54 Main Rd
Kumeu
PH: 412 8592
OPEN MON-SAT

YOUR RIDE ON MOWER EXPERTS



Young Learners

The spirit of Christmas

The spirit of Christmas often shines brightest in the simplest of gifts, those made by hand with time, thought, and love. There's something special about receiving a plate of freshly baked treats or a hand-painted ornament, especially when it's been crafted by little hands.

When children make gifts, they're not just creating something to give, they're learning the deeper meaning of giving itself. Whether it's stirring the mixture for Christmas baking, decorating a pinecone found on a walk, or gluing buttons and pom poms onto a homemade photo frame or card, each small act becomes a lesson in love, patience, and generosity.

Here at Gumboots ELC, that spirit is easy to see. Walk around the classrooms at this time of year and you'll find tamariki painting, baking, and creating. Tables (and

sometimes themselves) are covered in paper, paint, and glitter, the smell of baking drifts from the kitchen, and the sound of laughter and Christmas music fills the centre. Kaiako and parents who've been part of our Gumboots whānau for many years can still remember and treasure the things their children made here long ago. Those small, handmade crafts and gifts have become cherished reminders of love, time, and childhood creativity.

The spirit of giving also reaches beyond our classrooms. Extra kai from our gardens often finds its way to local community food stands, teaching tamariki that generosity is not only for family but for everyone around us. Sharing in this way reminds us that giving can take many forms, both big and small, and that the heart of Christmas is about thinking of others.

If you're looking for ways to continue this spirit at home, try creating simple gifts together. Decorate a small pot and gift it with seeds to plant together, a living







Enrol now for June 2026 onward - Don't miss out!!

1157 Peak Rd Just minutes from Helensville / Waimauku / Kumeu Ph: 411 9038

present that grows with care. Gather pinecones and turn them into decorations with paint, pompoms, and glue. Mix up a batch of salt dough to make handprint ornaments, or spend an afternoon baking to share with friends, neighbours, or whānau. These small projects invite children to slow down, create, and give from the heart, keeping the true spirit of Christmas alive in every thoughtful gesture.



Family fun 14th December

The sun is shining and our Summer Series is back. Join us for an afternoon of getting to know your neighbours whilst having fun at beautiful Whenuapai Park, 36 Whenuapai Drive. The event is free and all are welcome. Please remember plenty of sunblock and water. We look forward to seeing you there.

Scott Point School & Trees for Survival

Trees for Survival is an Environmental Education programme to grow and plant native trees to restore our local environment. The Trees for Survival Charitable Trust has partnered with Scott Point School to support the school in planting natives and caring for them till they are strong enough to be planted in an area where they are needed most – protecting and restoring habitat in waterways and on vulnerable land.

Recently, students from the School's Get Wise Champions group helped to pot nearly 2000 native plant seedlings with help from Deb from Trees for Survival. Our Scott Point School students worked incredibly hard to get all these seedlings ready to grow big and strong in our special nursery system set up at school. Over the next year, the children will care for these plants and in the winter of 2026, a group of Get Wise Champions will travel to an area being restored to plant them.



Aged care

Melbourne Cup Fun Leads into a Festive Season at Craigweil House

Before the tinsel and fairy lights took over, Craigweil House got swept up in Melbourne Cup fever this November! Residents and staff had an absolute blast getting ready for the big event, complete with fancy hats, colourful outfits, and a good dose of friendly competition.

In the lead-up to race day, residents got crafty and created their very own "horses" using pool noodles, socks, googly eyes, and all sorts of fun materials. There were some real masterpieces – from sleek racehorses to quirky ponies with personality!


When race day arrived, the fun really began. The staff took on the role of "horses," galloping and laughing their way down the track while residents placed their bets and

cheered them on. Later, residents joined in too, taking part in a hilarious "toilet paper race," where paper horses were rolled in toward the finish line – first one to the end was crowned the winner!

Now that Christmas is just around the corner, the festive spirit has filled the home. The decorations are up, the carols are playing, and there's excitement in the air.

From all of us at Craigweil House – residents, staff, and our wider family – we're sending warm Christmas wishes to you and your loved ones. If you're nearby, pop in and share a bit of festive cheer with us. The kettle's on, and there might just be a cup of tea waiting for you! PH 094208277

COME VISIT US!
WE ARE LOCATED NEXT TO PARAKAI SPRINGS




Discover a warm and caring home, nestled within the Kaipara Coast and Parakai's geothermal waters.

Rest Home • Hospital • Day Stays



Craigweil House
Home & Hospital
FEEL AT HOME WITH FAMILY



HENRIKWEST
CARE GROUP

09 420 8277 | 143 Parkhurst Rd, Parakai | info@craigweilhouse.co.nz



Aged Care

Caring for a loved one? you don't have to do it alone!

Every day at Kumeu Village and The Ladybug is filled with moments that show what genuine care looks like – care you can see in a smile, feel in a gentle touch, and trust in the warm, familiar connection between residents and our team.

Our homes are full of everyday joys and gentle moments, residents sharing ice creams, enjoying sunshine walks, playing skittles on the lawn, chatting outdoors, admiring the horses over the fence, relaxing on the deck, listening to music, or simply spending time with people who make them feel safe and valued.

There are also the quieter moments that mean just as much – a held hand, a reassuring chat, a resident gently supported to stand or dance, or a team member kneeling beside someone simply to bring comfort. These moments define who we are, and why families trust us.

As we move toward Christmas, the first signs of the festive season are beginning to appear. In the coming weeks, residents and staff will enjoy baking days, sunshine outings, garden chats, music afternoons, carols, gentle dancing, creative activities, family visits, and beautifully decorated living spaces created together by residents and our team. Our homes will soon be brighter, warmer, and filled with the joy that makes this season so special.

We're also delighted to share that Kumeu Village has opened two new rooms, thoughtfully furnished to offer comfort, peace, and a true sense of home. These rooms are ideal for respite, long-term care, 24-hour support, or care at a delicate stage of life.

Both homes warmly welcome you for a private, no-obligation visit. Bring your loved one, bring the family, and

experience the warmth, connection, and compassionate care that define our homes.

09 412 9112

info@kumeuvillage.co.nz www.kumeuvillage.co.nz





KUMEU VILLAGE

Luxury Rest Home, Hospital, Dementia and Respite Care

09 412 9112
www.kumeuvillage.co.nz



Aged Care

Kiwi Rehab



Kia ora. We're Kiwi Rehabilitation, your locally owned and operated one-stop shop for all things rehab. From new equipment to servicing and repairs, we're here to help you stay mobile, independent, and comfortable.

Proudly based in West Auckland for over 15 years, we're passionate about supporting our community with quality products, expert advice, and genuine care.

"He Tangata – it is people" is at the heart of everything we do. As a family-owned and operated business, we take the time to truly understand your needs. Our director, Graeme, brings over 30 years of experience in the rehabilitation industry, having worked with people of all ages and abilities – from those recovering from injury to those navigating the golden years.

We're here to make everyday life easier. Our range includes everything from pressure-relieving cushions and mobility scooters to daily living aids, wheelchairs, and so much more. And if we don't have what you're looking for, we'll work with our trusted suppliers to find a solution that's right for you. We also offer expert servicing and repairs to keep you moving – whether it's a flat tyre on your wheelchair, a broken scooter headlight, or a bit of routine maintenance, our team will get you back up and running quickly and safely.

Discover how we can help you live more comfortably and independently.

Visit our website or contact our friendly team today – because at Kiwi Rehabilitation, people always come first.

www.kiwirehab.co.nz | 027 244 2443 | sales@kiwirehab.co.nz

Your Local One-Stop Shop For New Products, Servicing & Repairs

Give us a call, send us an email or scan the QR code and get in touch today!



www.kiwirehab.co.nz
027 244 2443
sales@kiwirehab.co.nz



He Tangata, It Is People
KIWI REHABILITATION LTD.

Friendship goals realised for Keith Park Village's 'Golden Girls'



The companionship, camaraderie and commonality they've found with each other has surprised these three residents of Ryman Healthcare's Keith Park Village in Hobsonville. Three serviced apartment residents have been affectionately dubbed 'The Golden Girls' by fellow residents and team members due to the firm friendship they have formed. Anne, Nola and Bette say they 'just clicked' and have now become inseparable since settling into the village.

Anne shifted to Hobsonville to be near her daughter. "Coming here I was so anxious because I didn't know anyone," she says. Nola moved in shortly afterwards. "She sat opposite me at lunch and I thought to myself, 'I hope she's nice...'" Anne needn't have worried! "We just clicked. We have been through similar experiences in life."

Three months after Anne and Nola met, Bette moved into the village and the three immediately gelled. Says Bette: "My daughter had brought me in and along the corridor came Nola who said hello and introduced herself.

"She said, 'We'll look after you', and she did, from the minute I came."

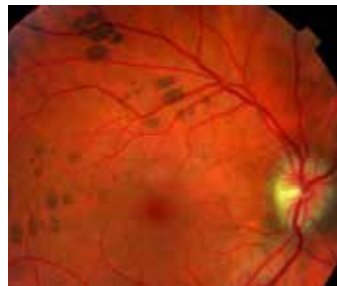
"She's the mother hen, and we're her chicks," laughs Anne. It didn't take long for the 'Golden Girls' nickname to be attached to them, inspired by the much-loved American sitcom of the same name.

There are plenty of activities that they enjoy doing together, including craft on Monday, exercises on Tuesday, then Monopoly and bingo on Wednesday and an outing on Thursday. Fellow residents often join them and all of them have grown very attached to Activities Coordinator Jess, who will join in for a game of pool or a walk around the village gardens. Bette sums it up: "Everyone notices how happy we are, our families, they're so happy for us. It takes the worry off them. They know I'm here and are so happy."



Health & Beauty

Make tracks to For Eyes



For our last case study for the year, here's a retinal finding that's a bit of fun. You've heard of tracking bears in the wild—but did you know you can find "bear tracks" inside your eyes?

In the world of optometry, bear tracking isn't nearly as dangerous as it sounds. It's a fascinating retinal phenomenon where small, pigmented spots appear in a honeycomb or footprint-like pattern on the back of the eye. These markings occur in around 1% of the population and are usually harmless and simply part of your eye's unique landscape. This patient was unaware of its presence, and it was discovered at a routine examination as is often the case with bear tracking. Like any retinal pigment, it should be monitored for change over time but is low risk.

Bear tracking can be differentiated from choroidal nevi (discussed in earlier articles) due to the specific wavelengths of light our Optomap scanner uses. The choroid is imaged by red light, so choroidal nevi disappear in the red-free view. The pigment causing bear tracking is within the retina, imaged by green light, and therefore clearly visible in the red-free view.

While "bear tracks" might sound adventurous, the real adventure is keeping your eyes healthy and your vision sharp. Regular eye exams can reveal not only quirky patterns like these but also early signs of conditions



FOR EYES
OPTOMETRISTS
EST 1993

- Advanced scanning equipment for early detection of cataract, glaucoma and macular degeneration
- Speciality assessment of child and adult reading difficulties
- Specific-tint lenses for Irlen Syndrome
- Lenses to correct red-green colour blindness

908 Main Road, Kumeu Shopping Village

www.foreyes.co.nz foreyes@foreyes.nz 09 412 8172

that need attention long before symptoms appear. Holiday hours at For Eyes: We'll be open until 5pm on Friday, 19th December, then closed for the Christmas break. We'll reopen at 9am on Tuesday, 6th January to welcome you into a clear, colourful new year. From all of us at For Eyes, have a joyful Christmas and a brilliant New Year. Book online at www.foreyes.co.nz or 09 412 8172

Get your feet ready for summer



Healthy feet, confident steps, and a great local gift idea.

As the weather warms up, it's time to swap boots for sandals and let your feet breathe again. But after months of being tucked away, you might notice

a few things that need attention: thick nails, fungal infections, or dry rough skin that's built up over winter.

That's where the team at Norwest Podiatry in Huapai can help. Their Medical Pedicures are the perfect way to get your feet looking and feeling great again, safely and professionally.

Treatments are carried out by qualified Podiatrists using sterile, medical-grade instruments. They focus on comfort and health first, gently removing dry or cracked skin, tidying thick nails, and finishing with nourishing hydration. The result? Smooth, refreshed feet that are ready to show off this summer. Many locals book a

STEP INTO SUMMER WITH HEALTHY FEET

BOOK YOUR MEDICAL PEDICURE TODAY



027 740 4545 / 09 412 7740

www.norwestpodiatry.co.nz



Health & Beauty

Medical Pedicure every couple of months as part of their regular self-care routine, it's a relaxing way to look after your feet and keep them in good condition year-round.

If you're looking for a thoughtful gift idea, Norwest Podiatry also offers Gift Cards that can be used for any treatment, including Medical Pedicures. They make an ideal Christmas or thank-you present for someone who deserves a bit of pampering, with the bonus of being practical too.

So, before you slip into your summer shoes, treat your feet (or someone else's) to some podiatry care you can trust. You'll find Norwest Podiatry opposite McDonald's in Huapai, or visit www.norwestpodiatry.co.nz to book online. Norwest Podiatry – proudly supporting the Kumeu and Waimauku community. Keeping our community moving, one step at a time.

Ask Dr. Heather



Should I have Botox® and fillers before or after cosmetic tattooing? Anon, Riverhead

If you're planning both injectables and cosmetic tattooing, timing matters more than most people realise. If you're thinking about lip tattooing and also want lip filler, do the filler at least 6

weeks beforehand. Filler changes the shape of your lips, which is what the tattoo artist uses as their guide. If you want eyebrow tattooing, it's best to have Botox® worn off first as Botox® can affect eyebrow position. As a rule of thumb, allow at least 3-4 months after your last Botox® treatment before tattooing. Once the tattoo has healed, you can resume Botox® treatments as normal.

If you already have microblading and want a more refined look with cosmetic tattooing, you will need laser removal first. Removing the old pigment gives a clean canvas for your artist to create the ideal shape. It usually takes a few laser sessions spaced several weeks apart, but the result is worth the patience.

I have personally had cosmetic tattooing done by Jeni Hart from Brows and Beyond in Kumeu (browsandbeyond.co.nz). I highly recommend Jeni as she is not only skilled with brows and lips, but she also has a laser, so can remove previous pigment. Jeni also works in reconstructive tattooing, creating realistic nipples for women after breast cancer surgery and restoring



ALLOR
COSMETIC MEDICINE

Dr. Heather Anderson
72 Waimarie Rd, Whenuapai
M: 0222626762
www.allor.co.nz

features for people with facial deformities. Her attention to symmetry and balance is exceptional, which sets her apart from the rest. Dr. Heather Anderson is a Cosmetic Medicine and Emergency Doctor who practises in her own clinic at ALLOR Cosmetic Medicine in Whenuapai and features in the All or Nothing Podcast (available on Spotify, Youtube and iHeartRadio). If you have a question for Dr. Heather you would like answered anonymously, please email askdrheather@allor.co.nz

Welcome to Zash Hair – 2026



Welcome to a brand-new year at Zash Hair, where beauty, confidence, and creativity come together. As we step into 2026, we're thrilled to announce that our books are officially open and we are now welcoming new clients into our salon family. Whether you're seeking a fresh look, a transformative colour, or simply a space where you feel cared for and understood, we're excited to begin that journey with you.

At Zash Hair, we believe every client deserves a personalised experience. From the moment you walk through our doors, our focus is on listening, understanding your goals, and working collaboratively to bring your vision to life. Our stylist/director Carla is committed to providing exceptional service, using high-quality products, and staying up-to-date with the latest trends, techniques, and education. Your hair is an extension of your identity, and we're honoured to be part of helping you express it.

Whether you're a long-time admirer of our work or discovering us for the first time, we're here to make your experience relaxing, uplifting, and unforgettable. We pride ourselves on creating a welcoming atmosphere for everyone—where you can unwind, enjoy yourself, and walk out feeling refreshed and radiant.

Thank you for considering Zash Hair as your salon of choice. We cannot wait to meet you, connect with you, and help you achieve your 2026 hair goals. Bookings are now open, and we look forward to welcoming you into the Zash Hair family. Here's to an amazing year of beauty, creativity, and confidence!

Thank you for considering Zash Hair as your salon of choice. We cannot wait to meet you, connect with you, and help you achieve your 2026 hair goals. Bookings are now open, and we look forward to welcoming you into the Zash Hair family. Here's to an amazing year of beauty, creativity, and confidence!



HAIR BY CARLA

77 Waitakere Road, Waitakere, Auckland

Phone: 021 814 663 zashhair

Sun Protection: lets help you get it right this summer



By Dr Cherie, Restore Cosmed

As we head into the sunny months, it's the perfect time to check how well you're really protecting your skin. Most people apply far less sunscreen than the amount needed to get the SPF rating on the bottle (studies suggest most people use half or less). And that means much less protection than you think you are getting.

To achieve the labelled SPF, you need around 2mg of sunscreen per cm² of skin. In practical terms, that's about ¼ teaspoon for the face and neck, or the length of two fingers. If you're only using half that amount, you're getting roughly half the listed SPF protection. That's why we always recommend starting with an SPF 50, so even if you fall short, you'll still be closer to adequate coverage.

Sunscreen should be applied 20 minutes before sun exposure to allow it to form a proper protective layer, and be reapplied every two hours (or more often after swimming or sweating). Don't forget frequently missed spots like ears, tops of feet, and the back of the neck.

Sun protection is a whole-family habit. Childhood sunburns are strongly linked to a greater lifetime risk of skin cancer, making it vital to establish good routines early. For children, daily use of broad-spectrum SPF 50, hats, and protective clothing builds lifelong habits that reduce their lifetime risk of skin cancer. This is even more important if you have a first degree relative with a history of melanoma, as your baseline risk is automatically doubled.

At Restore Cosmed, we've curated an online collection of effective, easy-to-wear sunscreens for the whole family chosen by doctors for their comfort, protection, and skin-friendly formulations. You can explore our favourites via our website at www.restorecosmed.co.nz/store/spf

Restore Cosmed – Doctor-Led Cosmetic & Skin Clinic, Huapai. 20 Matua Road, Huapai, Auckland.

www.restorecosmed.co.nz

RESTORE
COSMED
SKIN AND MEDICAL

www.restorecosmed.co.nz
contact@restorecosmed.co.nz

20 Matua Road,
Huapai.

Your summer skin health guide



By Sarah Tumulty – Your Skin Nutritionist
Functional Skincare Practitioner & Nutritionist

As the sun shines brighter and the days grow longer, summer brings warmth, joy, and more time outdoors – but it can also challenge your skin's natural balance. Sun, salt, and heat can dehydrate and irritate the skin barrier, leaving it feeling tight or flushed.

1. Protect your barrier: Start with a gentle, non-foaming cleanser and follow with a serum such as Osmosis Rescue or Replenish to calm redness and strengthen the barrier. A healthy barrier locks in moisture and defends against irritation, keeping your skin soft, smooth, and radiant.

2. Smart sun protection: Daily SPF is essential. I'm excited to now offer Earth's Kitchen Natural Sunscreen – winner of 16 global awards, proudly New Zealand-made, 100% natural, reef-safe, and gentle enough for sensitive skin and even babies. Crafted with zinc oxide and nourishing native plant oils, it melts beautifully into the skin while providing broad-spectrum UV protection and antioxidant care. Reapply regularly when outdoors.

3. Hydrate and balance from within: Begin your mornings with lemon water or electrolytes, eat water-rich foods like cucumber and berries, and enjoy herbal teas such as dandelion or peppermint to support natural detoxification. Deep breathing, gentle movement, and time in nature also help regulate stress and enhance skin clarity.

4. Cool, restore & renew: After sunny days, cleanse gently, apply a hydrating mask, and unwind with LED light therapy or magnesium tea to restore calm overnight. Osmosis Vitamin A (Retinaldehyde) can also be safely used throughout summer – it's pregnancy-safe and works to boost collagen, refine texture, smooth fine lines, and brighten dull skin for a healthy, even glow.

Your SWAN Summer Ritual: Cleanse • Hydrate • Protect • Restore. Book your Summer Skin Health Facial or Functional Skin Consultation this month and receive a complimentary LED session for added

SWAN
SKIN WELLBEING AND NUTRITION
treating the source of your skin concerns

- Skin & Digestive Consultations
- Skin & Nutrition Plan with Guidance
- Advanced Skin Treatment Facials
- Reflexology Facials
- Holistic Skin Mapping
- Hair Testing: Food Sensitivity & Nutrition
- Practitioner Grade Products
- Teen Skin Advice
- Swedish Relaxing Massage

Sarah Tumulty – Your Skin Nutritionist
FUNCTIONAL SKINCARE PRACTITIONER & NUTRITIONIST

KUMEU, AUCKLAND | PHONE: 0274473013
WWW.SWANSKINANDNUTRITION.COM

Area Columnists

Transport top of mind in local survey

By Cameron Brewer – MP for Upper Harbour



Responses to my recent electorate survey reflected the everyday pressures locals face. The top concerns were the cost of living, health services, jobs, and economic growth.

Transport was also very prominent. A large majority of you reinforced what we all know – local infrastructure is not keeping pace with growth.

On transport matters, common comments related to roading around Hobsonville and Westgate, and in particular, Brigham Creek Road and a desire for traffic lights or a roundabout. The need for better motorway connections, including west facing on and off ramps at Squadron Drive, was also conveyed strongly.

We received a large volume of comments about on-street parking and the pressure it places on local streets. Several responses raised flow-on effects for rubbish collection, deliveries, and emergency access during busy periods.

On public transport, respondents raised bus and ferry services and reliability, not to mention more options around safe cycling and walking routes.

I live in the heart of our community – in Hobsonville Point. I inherently understand the challenges our fast-growing neighbourhoods face, and I will continue to push for better infrastructure and services.

Thank you for your survey responses. They reinforce the work we're doing in Wellington to strengthen the economy, and the work we must step up locally to meet the enormous population pressures in Auckland's North-West.

My office door is always open to assist you on any local issues you may have, or frustrations you may be experiencing with government departments and the council.

Have a great summer.



Have a great summer!

Cameron Brewer
MP for Upper Harbour

upperharbouroffice@parliament.govt.nz
09 416 3249 | 15/102C Hobsonville Rd

Stay in touch!

National
Authorised by C Brewer, Parliament Buildings, Wgtn.

A Christmas present from Massey Birdwood Settlers Association



Sign up before Christmas for Kung Fu lessons, and you will go into the draw for free lessons in February and March 2025.

You can also do the same with Krav Maga West Auckland.

The Association has decided to provide the above offer as by the time you read this column, the 100th Annual General Meeting of the Association will have taken place in the Den.

The rules are pretty simple: contact See Wong from Kung Fu, pay your fees for the balance of 2025, and he will put your name in the draw for free Kung Fu lessons in February and March 2025, paid for by the Association.

The Association is also offering the opportunity for someone to have their fees for Krav Maga lessons paid in February and March 2026. You will need to contact Bertrand van der Plas on 0226909837.

See Wong, the Kung Fu Sifu at Massey Birdwood Settlers, can be contacted by phoning 021383021.

If you want to join the Association and learn about Local Government, you can do so by contacting our Secretary, John Riddell, at masseybirdwood@gmail.com.

Grey Power

We extend our best wishes for a joyful Christmas and a healthy New Year 2026 to all members and friends. Since July 2025, our membership has grown by 55 new members.

The final Zone Two Grey Power Northern Region meeting was at Howick Library on November 26 hosted by the Howick Pakuranga Grey Power Association. John Winther has been appointed as the new Treasurer. Our pre-Christmas lunch will be held on Thursday, December 11, at 12:00 pm at Swanson RSA, 663 Swanson Rd, at a cost of \$26 per person. We invite members to join us in farewelling long-serving office volunteers, Sylvia Sweetman and Anne Marie Scott, who are retiring in December 2025.

Please mark your diaries for the following 2026 meetings at Te Atatu South Community Centre, 247 Edmonton Rd, Te Atatu South:

General Meeting: Friday, March 20, 2026, at 12:30 pm

Annual General Meeting: Friday, June 26, 2026, at 12:30 pm

As 2026 is an election year, we encourage members to stay informed about policies on National Superannuation and Health. We wish everyone a relaxing holiday season and look forward to continuing our advocacy in 2026.

The Waitakere Grey Power Association Office will be closed from Friday 12 December and will reopen on Monday 2 February 2026. Written by Mate Marinovich, President, Waitakere Grey Power Association, Office: 247 Edmonton Rd, Te Atatu South 0652

Hobsonville Church & Settlers Cemetery



On 25 October 2025 around 180 descendants of the early Hobsonville settlers celebrated 150 years of the Hobsonville Church & Settlers Cemetery. Almost all of the descendant families are related to each other. Cameron Brewer, our local MP,

was the keynote speaker.

Hobsonville Church was built in 1875 by John Danby (1849-1923) as a church, school and gathering place, incorporating a graveyard in the grounds on one acre of land donated by R.O. Clark I (1816-1896). Hobsonville was then a thriving community of 25 to 30 houses, with a mixed economy based on brick and pottery production and farming. The weatherboard church and school was a simple, gabled design, with a steep, shingled roof and a small porch at its west end.

In 1877 the land was transferred to five trustees, who are all buried in the graveyard, Joshua Carder (1816-1895), R.O. Clark II (1854-1905), Joshua Ockleston (1836-1896), Thomas Scott (1827-1892) and William Sinton (1837-1880). The earliest recorded burials in the graveyard date from 1875, although it is suspected the graveyard may have been in use well before that year, as European settlers were living in the district from the mid-1850s.

Our cemetery is unique with some of the graves incorporating ceramic bricks and pottery in the design of headstones and tombs, and our cremation wall uses ceramic pipes, honouring Hobsonville's industrial heritage. The Church building and graveyard are maintained by volunteers, descendants of the early Hobsonville settler families. The Church is a listed Historic Place.

The Settlers' Church is available for Wedding or Civil Union (hire fee \$595), Baby Naming, Baptism or other Venue booking (hire fee on enquiry). Wedding or Civil Union bookings from all, any or no denomination are welcomed and you provide your own Celebrant. There are no rules around which Celebrant, or religious or non religious Celebrant you can use. www.hobsonvillechurch.co.nz



Seniors' Wellness Expo – Go for Gold!



A thoroughly enjoyable day was had by all at the first Seniors' Wellness Expo – Go for Gold! held at the Sunderland Lounge, Hobsonville recently. The event was buzzing from start to finish, full of conversation, curiosity, and community connection.

Visitors explored a wide range of stalls, learning about local groups, community gardens, health services, home care, and wellness providers. There was something for everyone, from blood pressure checks and nutrition tips to advice on scams, elder abuse awareness, and staying active.

Throughout the day, short presentations and workshops offered practical tips on movement, brain fitness, planning for the future, grief and more. A little bit of Bach from a talented violinist added a touch of music to the lively atmosphere.

Feedback from both attendees and stall holders was overwhelmingly positive. The day succeeded in connecting people, sharing knowledge, and celebrating wellbeing – a fantastic outcome for the expo's first year.

Wayne Taylor Band – Christmas gig with carols



The Wayne Taylor Band will be at the Rifle Range, Hobsonville Point (opposite 6 Catalina Bay Drive) on Sunday 14 December at 5pm to play some of their favourite covers and originals until 6pm, and then there will be a mix of Christmas Carols you can sing along with (if you want to) and a few Christmas

items, finishing soon after 6:30pm. The trumpeter (Callum), and some singers including our carol lead singer (Miki) should be there again so it will be a happy and heartwarming event. There will be a few children's Christmas songs (Jingle Bells, Santa Claus is Coming to Town) so all ages will enjoy the event. There will be a couple of food trucks there, or you can bring a picnic if you like. Hopefully the weather will be nice.



keeping it local

The Trusts support schools in The West.

\$180,000

back to our tamariki & rangatahi in 2025.



Find out more here
thetrusts.co.nz

EBRC’s Santa Run returns to Hobsonville – Supporting West Auckland Hospice



Hobsonville Point is set to come alive with festive colour on Thursday 18 December, as EBRC hosts its second annual Santa Run, a community fun run/walk raising funds for West Auckland Hospice.

This year’s event is bigger, brighter, and unmistakably Christmassy. Every adult participant will receive a full Santa suit, transforming the 5km route around Bomb Point into a joyful sea of red and white. With a professional start/finish arch, festive course décor, music, and a lively MC, the atmosphere is set to be one of pure celebration. Kids (12 and under) can enter free with an adult, with Santa hats and more to help them get into the spirit.

Adding to the magic, Catalina Bay Farmers Market will be running a Christmas Night Market alongside the event, creating the perfect evening out for families – whether they’re taking part in the run or simply soaking up the festive buzz. Meanwhile, Little Creatures will be hosting the post-run fun and prize giving.

The Santa Run isn’t just about fun – it’s about community. All entry fees go directly to West Auckland Hospice, supporting their essential work throughout the West Auckland region. With generous local sponsors contributing prizes and support, the event is shaping up to be a highlight of the neighbourhood calendar and a meaningful way to give back.

Whether you’re a seasoned runner, a casual walker, or someone who simply loves Christmas, this is an event not to miss. For more information and to get your tickets, see @earlybirdruncrew on Facebook and Instagram.

Skincare Workshops in Your Community



In West Auckland, O’Black Cosmetics is more than just a skincare brand. It’s a welcoming space where people can learn about their skin, explore ingredients, and discover simple routines that truly work.

Our hands-on workshops and one-on-one sessions are perfect for anyone who feels overwhelmed by skincare choices, isn’t sure which products to use, or simply wants to understand their skin better. The focus is always on learning, clarity, and practical guidance, so every participant leaves feeling empowered and confident.

The workshops are led by a founder with a Bachelor’s degree in Chemistry, sharing her knowledge of ingredients and formulations in a friendly, approachable way. Attendees gain real insight into their skin, learn which ingredients suit them best, and discover how to make thoughtful choices for their routines.

Alongside these educational experiences, O’Black Cosmetics handcrafts small-batch skincare right here in West Auckland. Each product is made with carefully selected oils, plant extracts, and active ingredients, with a focus on local ingredients, creating rich, nourishing formulations.

Our mission is simple: to educate, support, and provide high-quality skincare that helps people feel confident and informed about their skin.

Whether you’re curious about joining a workshop, exploring skincare hands-on, or simply learning more about caring for your skin, we invite you to discover O’Black Cosmetics.

Visit www.oblack.co.nz to find out more or to join an upcoming workshop

O’Black Cosmetics

Simplified, nourishing skincare for modern lives.

- A friendly, hands-on skincare workshop
- Personalised skin guidance
- Locally handcrafted products & giftsets

www.oblack.co.nz
info@oblack.co.nz

Auckland Folk Festival at Kumeu January 23-26

The Auckland Folk Festival returns to the Kumeu Showgrounds in 2026. A massive programme is offered showcasing local and international acts across the musical spectrum. The three-day event includes marquees, onsite camping and food and market stalls.

Early bird tickets close December 31. Tickets available from Eventbrite. Visit www.aucklandfolkfestival.co.nz or check Facebook for more information.



Connected

Connected Neighbourhoods Trust Fun In The Park event will be taking place at Observation Green in Scott Point on the 31 January from 2:30 – 5pm. This is always a special time of fun and connection as we come together and celebrate the community we call home. There will be face-painting, giant lawn games, a smoothie bike and an epic Summer vibe, Keep an eye on the Connected Neighbourhoods Trust Facebook page as well as the community groups for more info! We look forward to seeing you there!

Westgate

MEDICAL CENTRE

Westgate Shopping Centre, Maki street

Urgent Care

Clinic

Open 7 Days

8am to 8pm

For all urgent medical

and trauma needs

Xray, Pharmacy, Physio on site

833-3134

www.wgmc.co.nz

Real Estate.

It’s what we do.

0800 900 700

Raine & Horne

rh.co.nz/kumeu

Country Living Realty Limited t/a Raine & Horne Kumeu - Hobsonville

WESTGATE
SHOPPING CENTRE

FREE CHRISTMAS COOKIE DECORATING



13 - 23 DECEMBER

DAILY SESSIONS:

10:30AM | 11:45AM | 1:00PM

BOOKINGS ESSENTIAL. BOOK ONLINE AT **www.westgate.kiwi**